

C8 Radio Updates

18.11.2021

Nikos Karastathis



Studies involve:

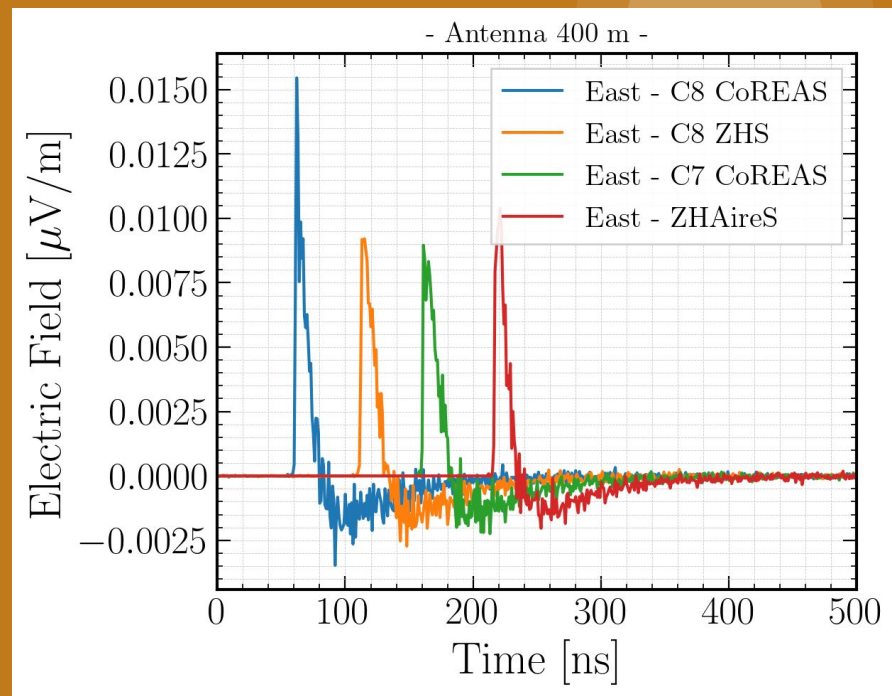
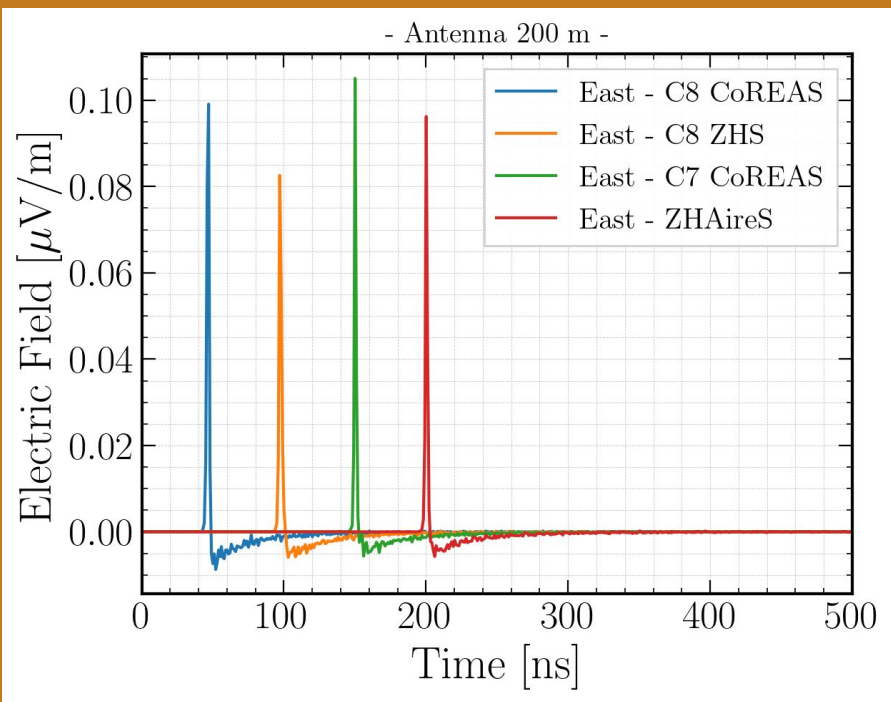
- **EM showers with & without geomagnetic field**
- **Comparisons with C7 and ZHAireS**

Work that has been done:

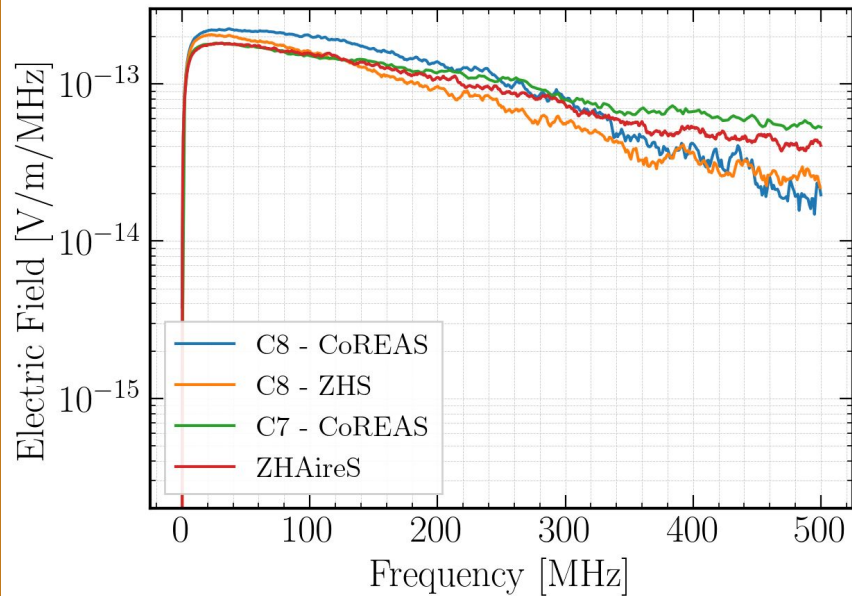
- **bug fixes in ZHS**
- **fixed exponential refractive index profile**
- **upgrade to PROPOSAL 7.1.1**
- **got rid of Setup files dependency, so we can have by default the most general and realistic environment interfaces**

**Some plots with
Geomagnetic field turned
ON (PROPOSAL 7.0.5)**

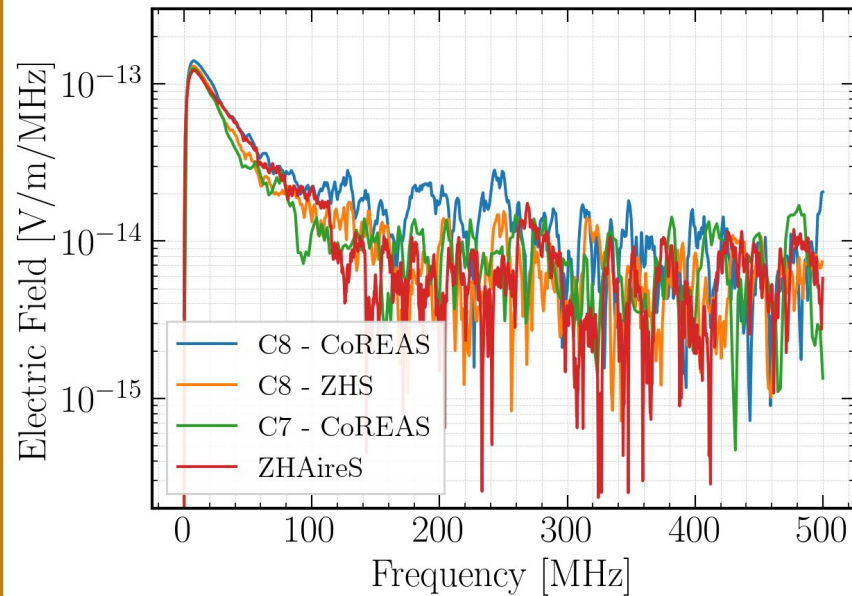


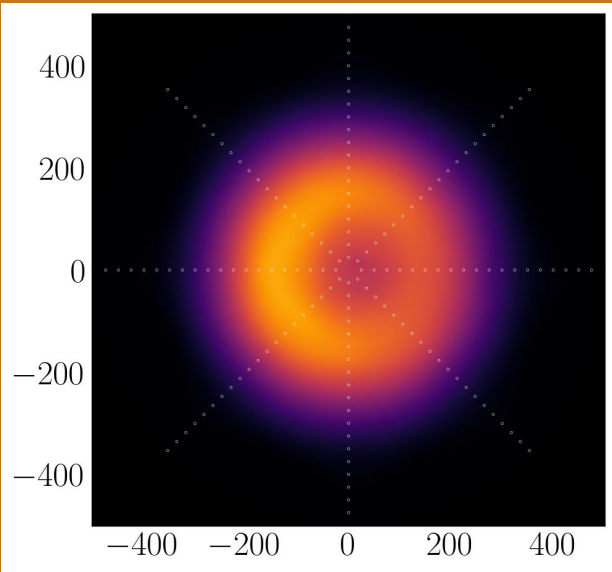


- Antenna 200 m -

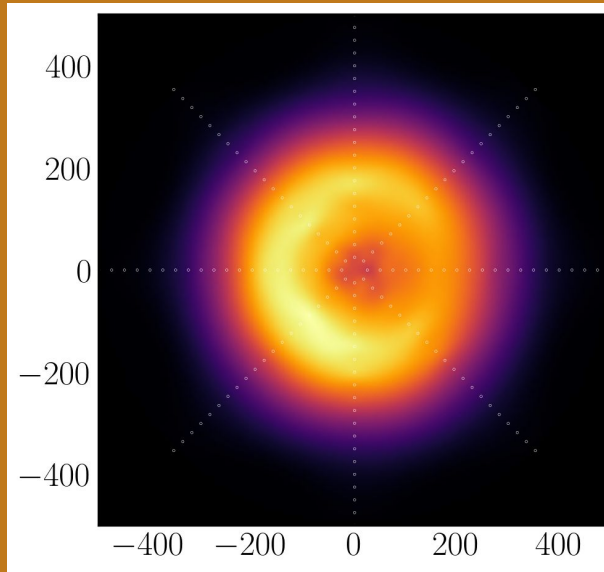


- Antenna 400 m -

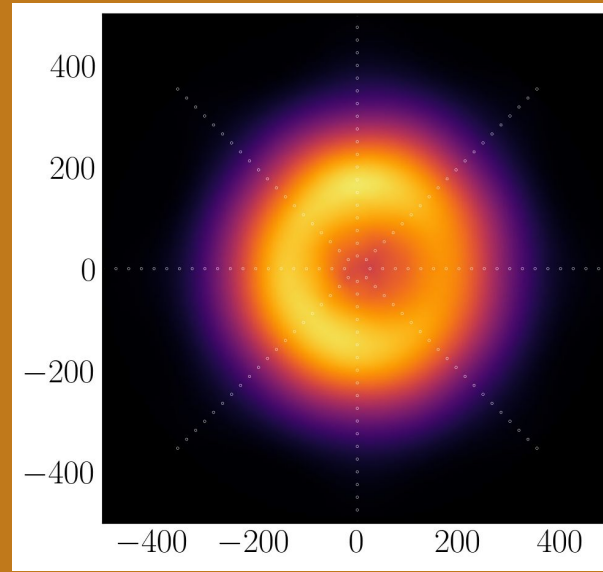




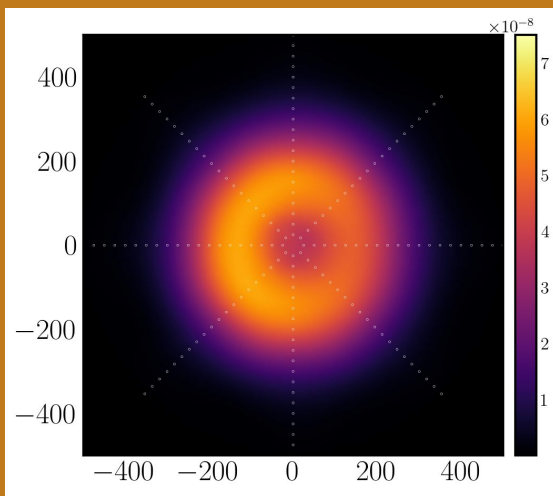
C7



C8 CoREAS



C8 ZHS

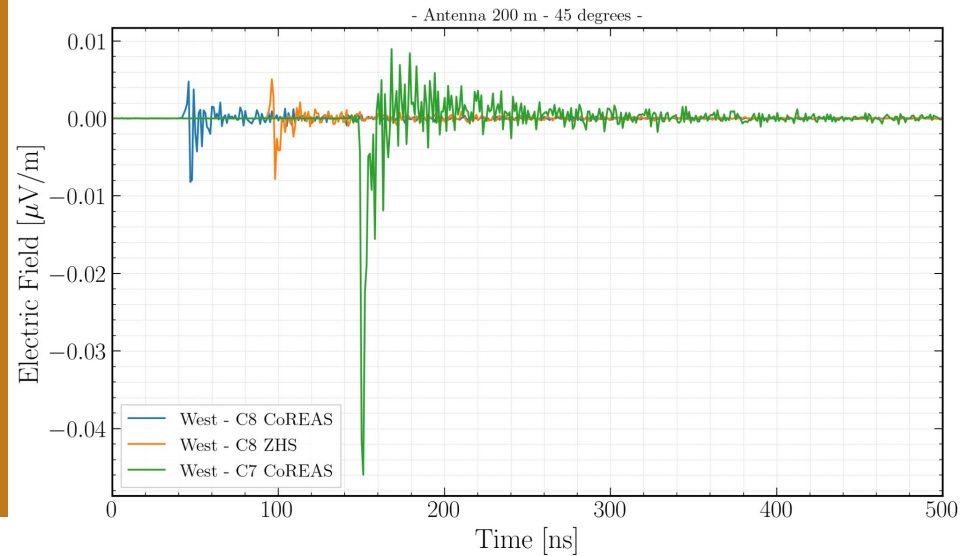
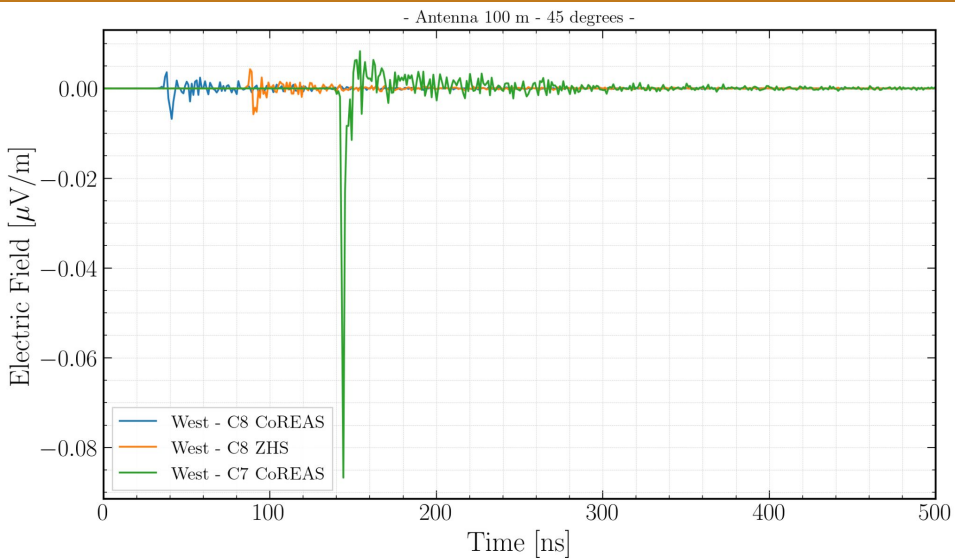


ZHAireS

All polarizations

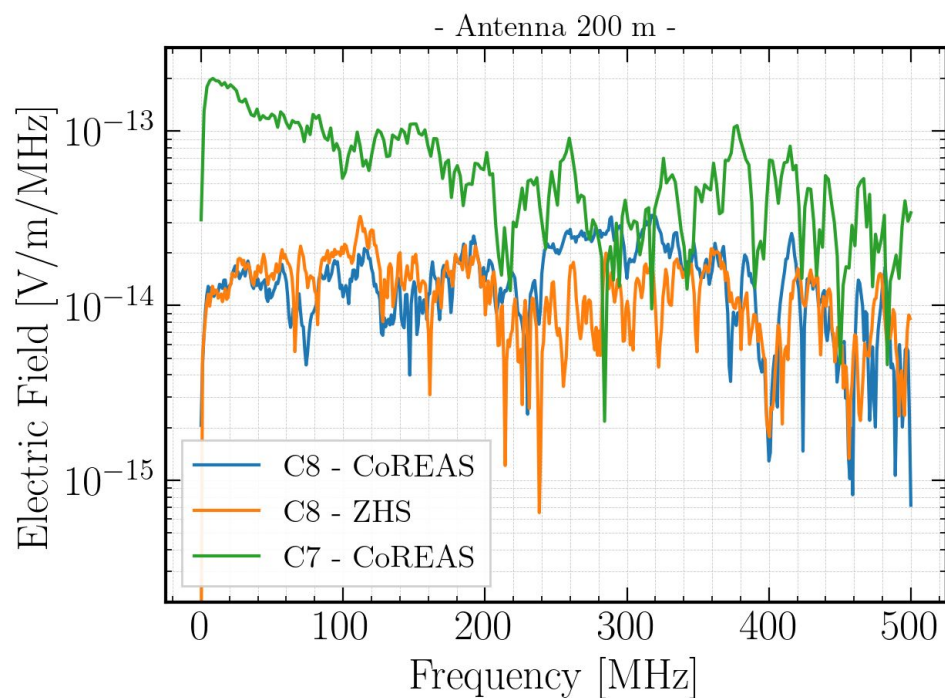
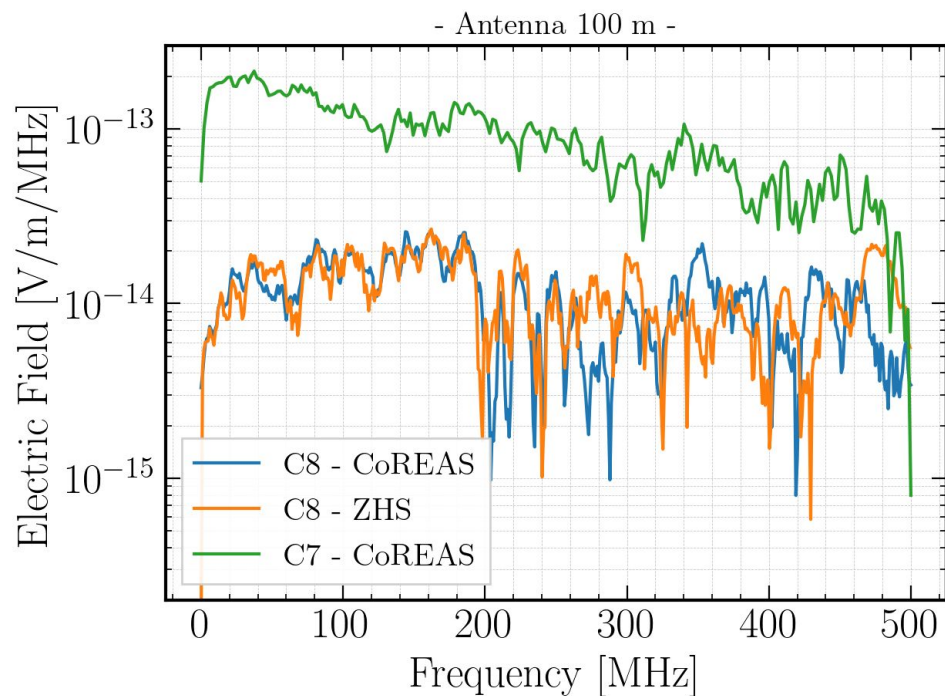
**Some plots with
Geomagnetic field turned
off (PROPOSAL 7.0.5)**

Antenna at 100m from shower core



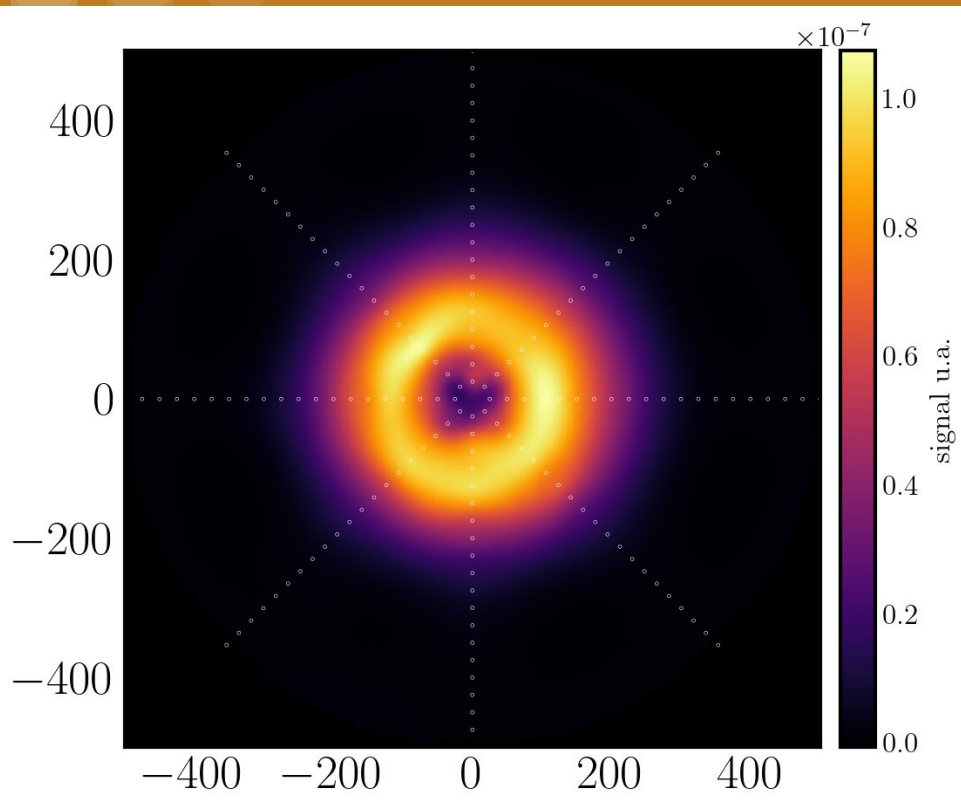
Antenna at 200m from shower core

Antenna at 100m from shower core



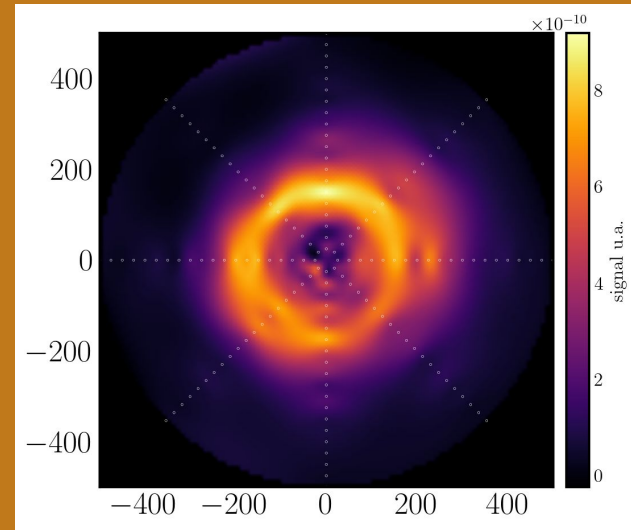
Antenna at 200m from shower core

All Polarizations

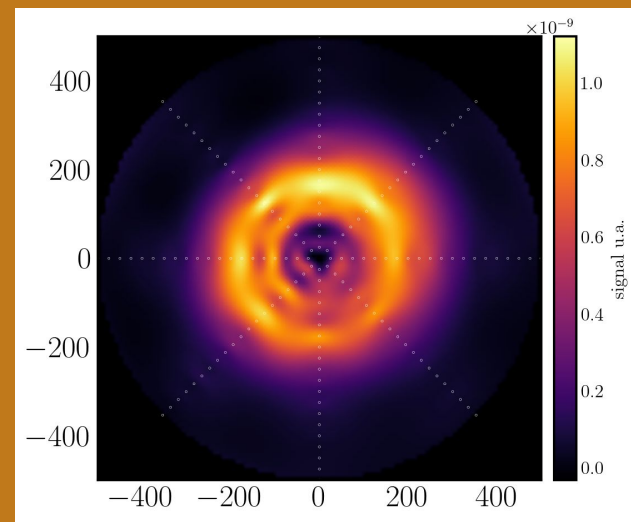


Corsika 7 - CoREAS

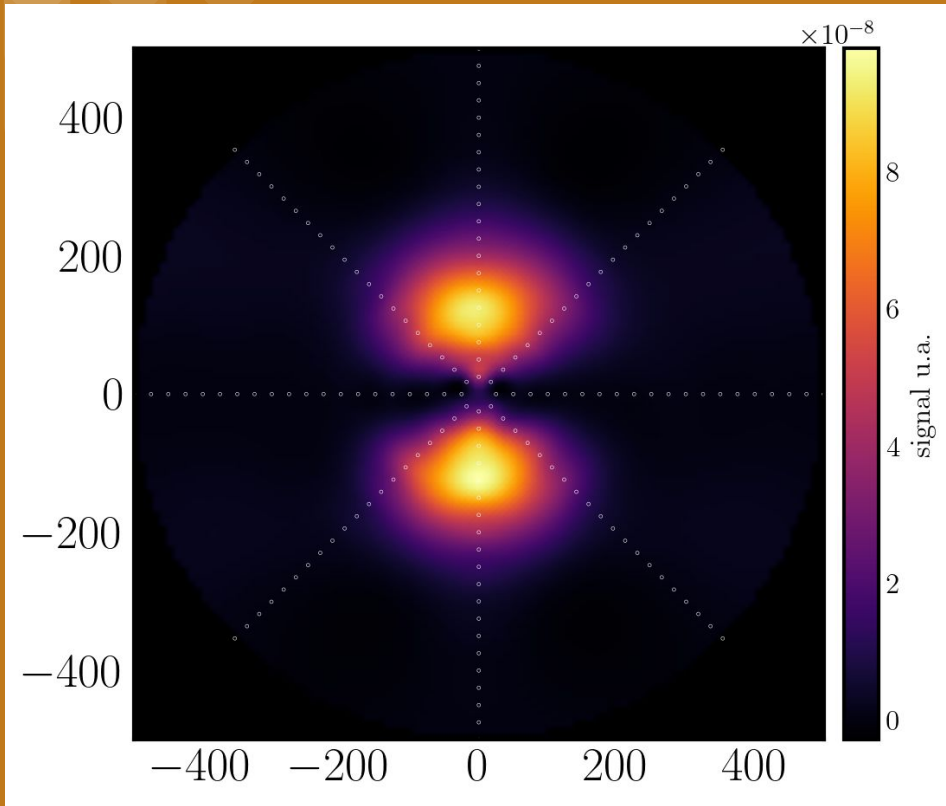
C8 - CoREAS



C8 - ZHS

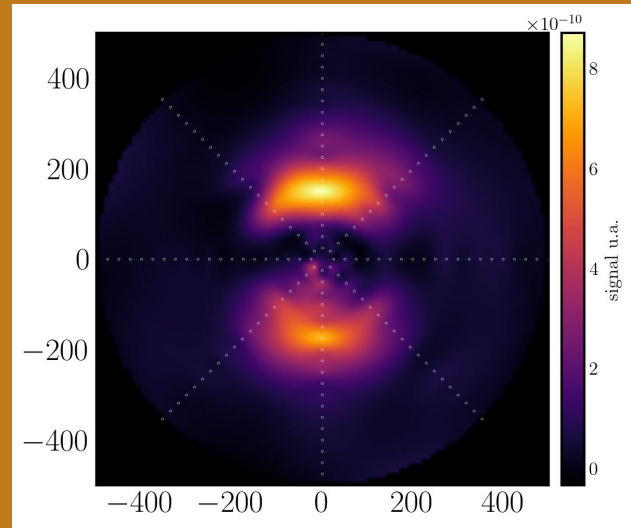


North Polarization

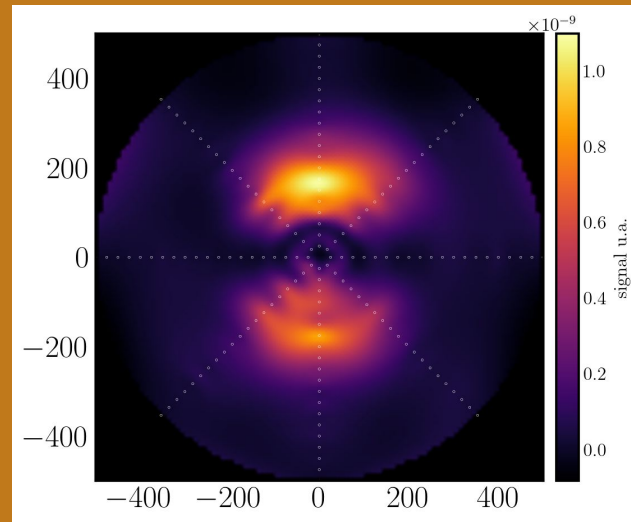


Corsika 7 - CoREAS

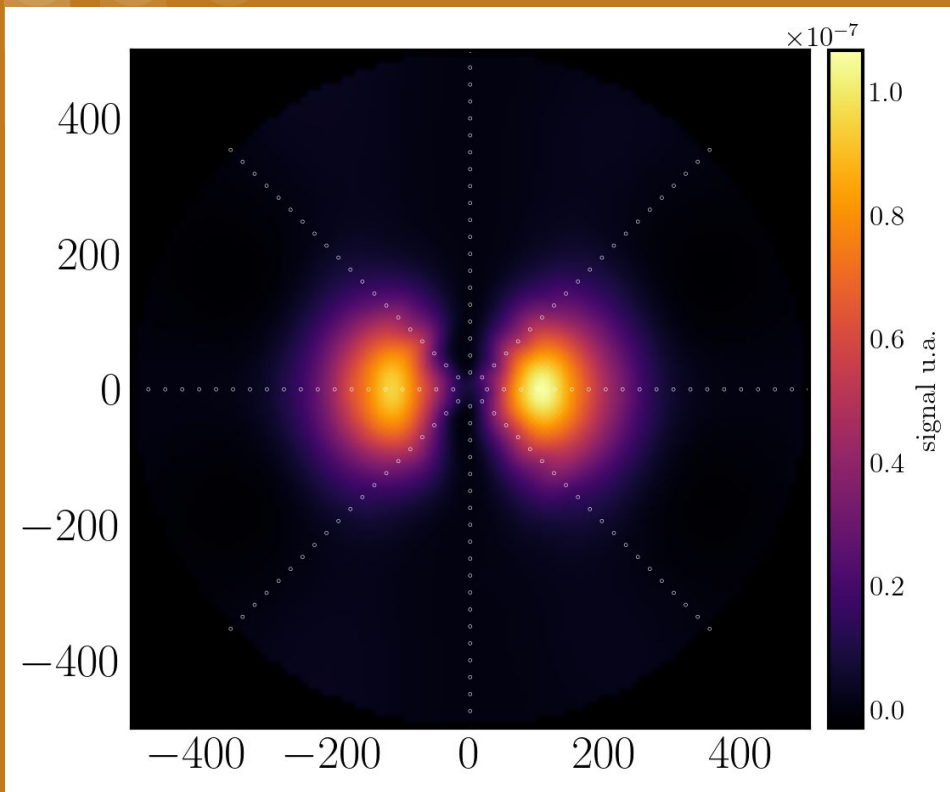
C8 - CoREAS



C8 - ZHS

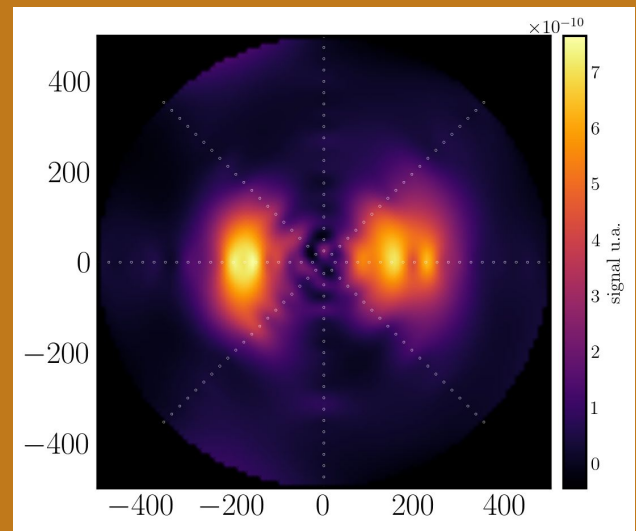


West Polarization

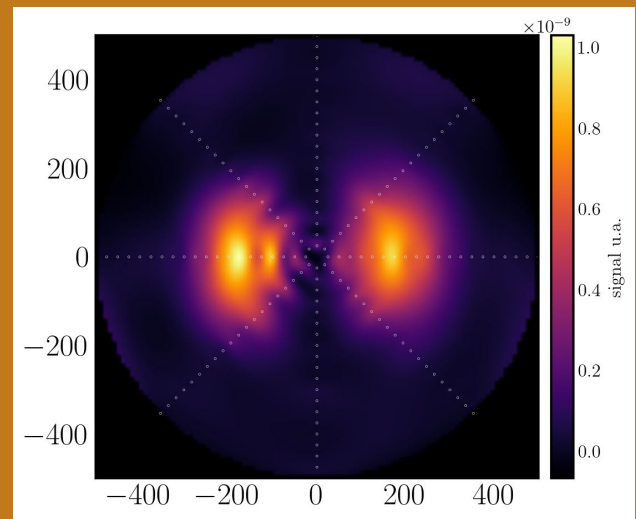


Corsika 7 - CoREAS

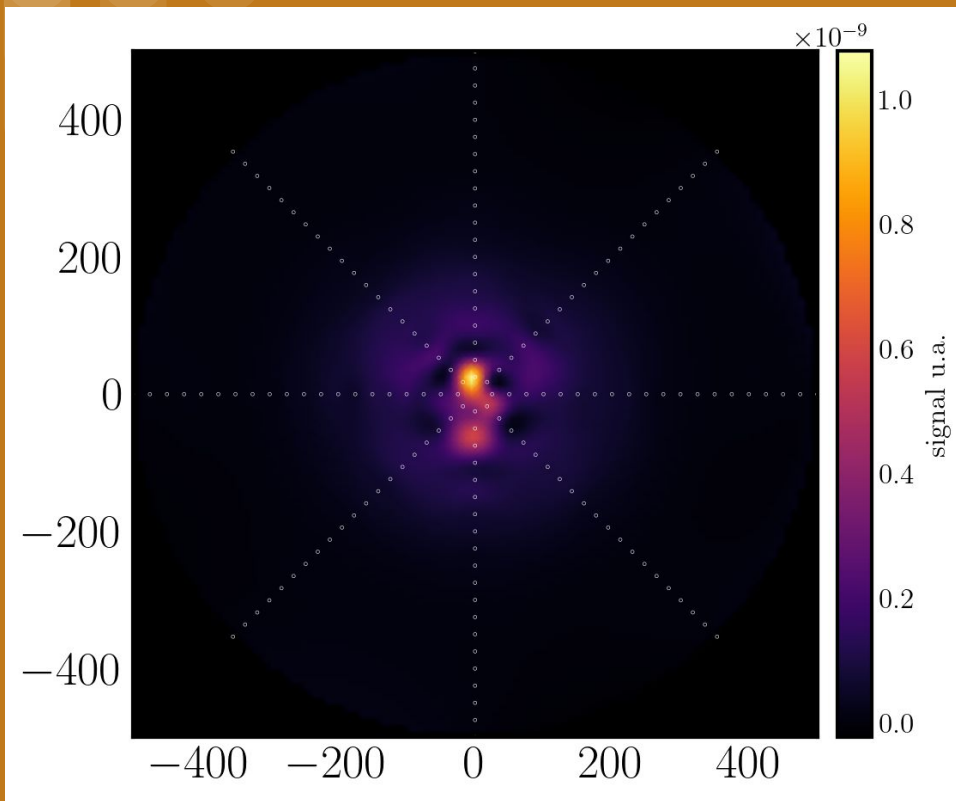
C8 - CoREAS



C8 - ZHS

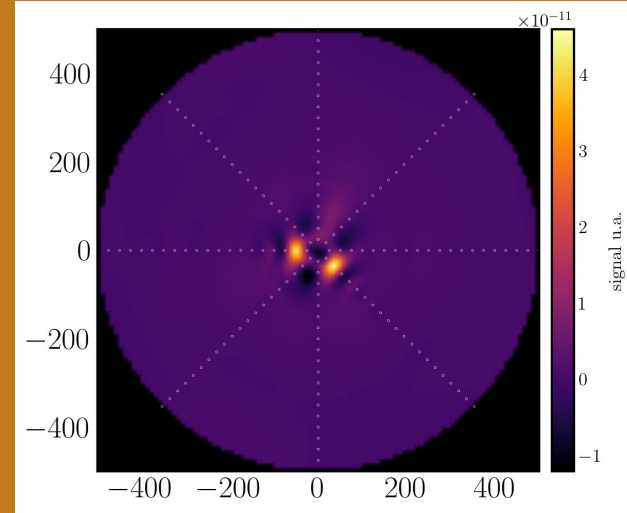


Vertical Polarization

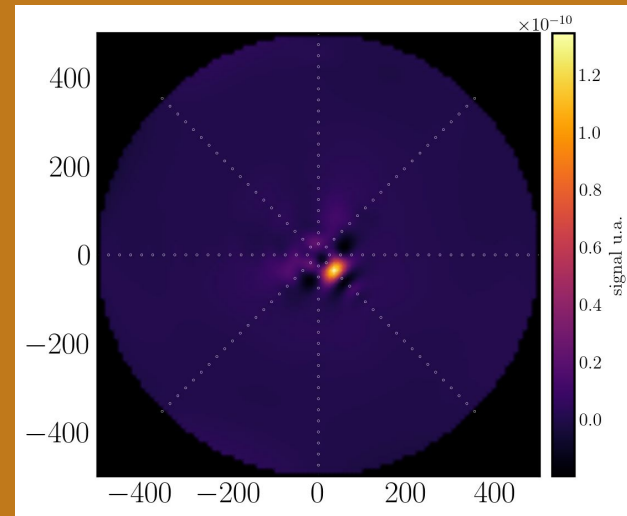


Corsika 7 - CoREAS

C8 - CoREAS



C8 - ZHS



Thoughts:

- There seems to be a discrepancy in the Askaryan emission - although a better analysis is being done as we speak to validate this or not.
- We need to merge radio and simulate these cases again.
- I want to make use of C8 boundary crossing and perform a more sophisticated propagator.
- A faster propagator would also be nice so we can now do a full fledged analysis using the fixed exponential refractive index profile.

Thank you!

