

Monitoring the non-thermal Universe

The background of the slide is a deep space image featuring two large, glowing purple nebulae. One nebula is on the left, and another is on the bottom right. They are connected by a faint, wispy trail of purple gas. The background is filled with numerous small, distant stars of various colors, including white, yellow, and blue. A bright, multi-colored star (blue, yellow, and orange) is visible in the center-right area, with four thin lines radiating from it towards the corners of the slide.

— bringing people together

→ new insights to physics

monitoring and variability in one room

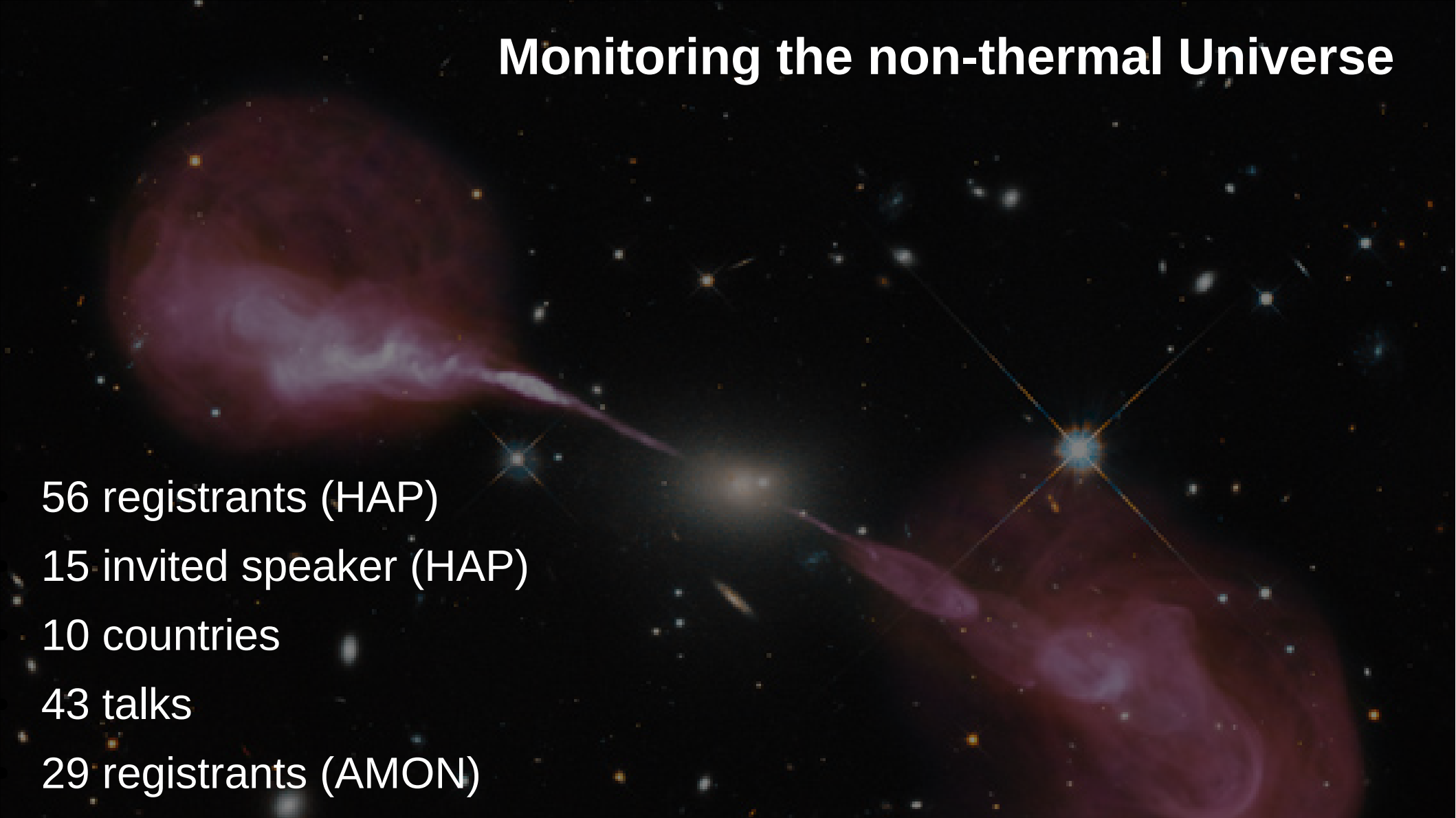
exchange of ideas

new common projects

overview of methodology

what data is available

Monitoring the non-thermal Universe



56 registrants (HAP)

15 invited speaker (HAP)

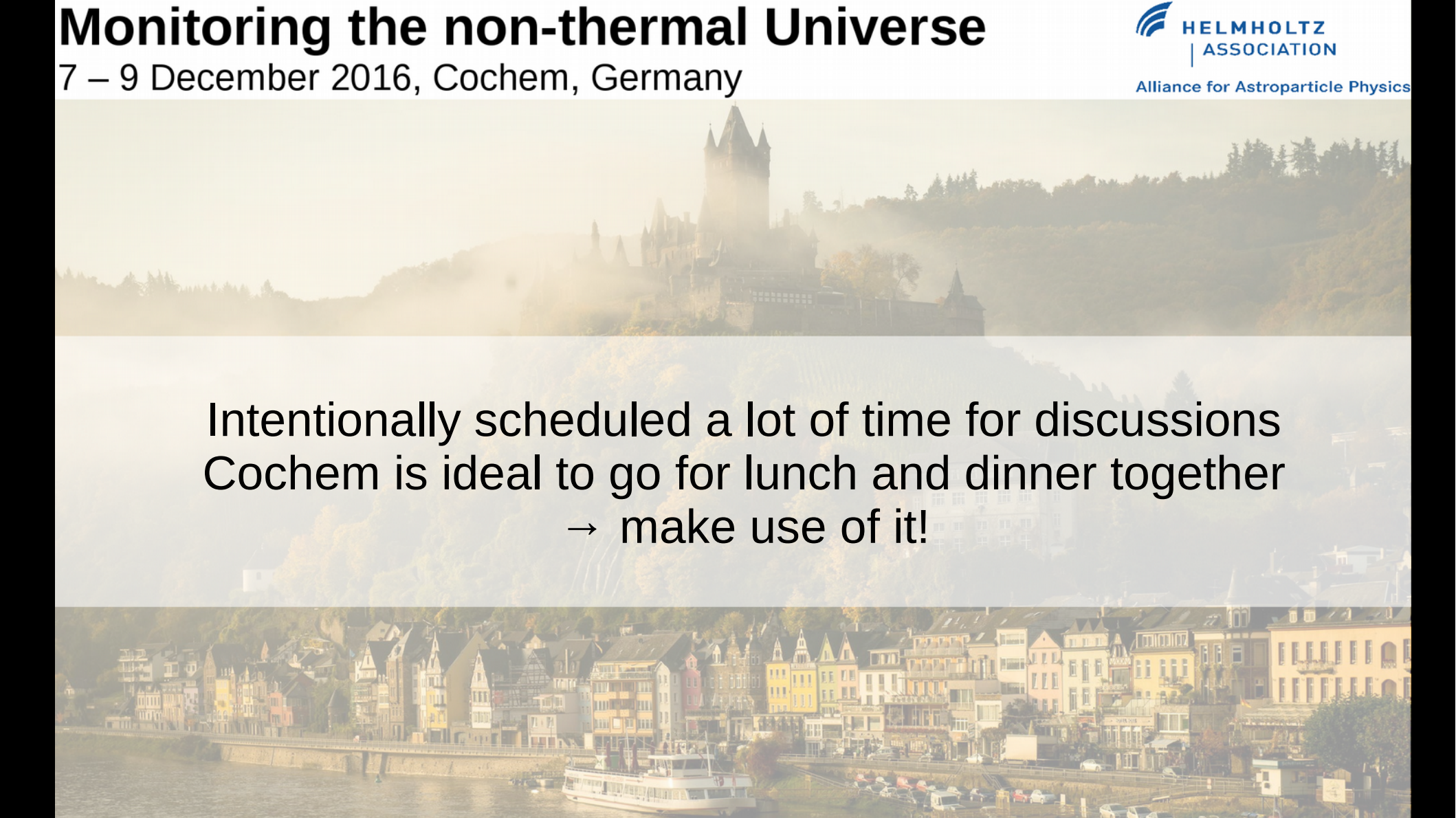
10 countries

43 talks

29 registrants (AMON)

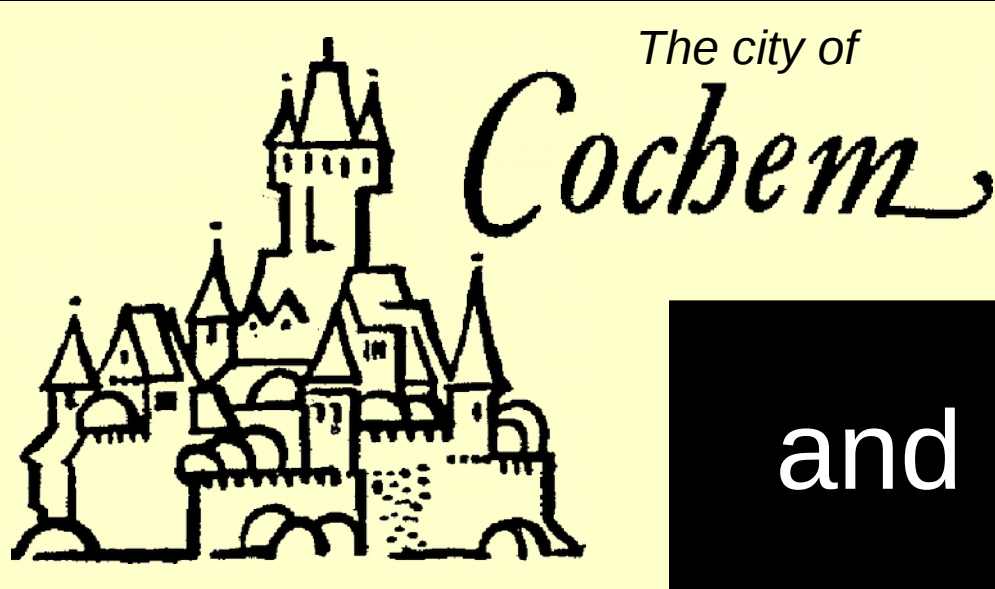
Monitoring the non-thermal Universe

7 – 9 December 2016, Cochem, Germany



Intentionally scheduled a lot of time for discussions
Cochem is ideal to go for lunch and dinner together
→ make use of it!

Sponsored by...



and

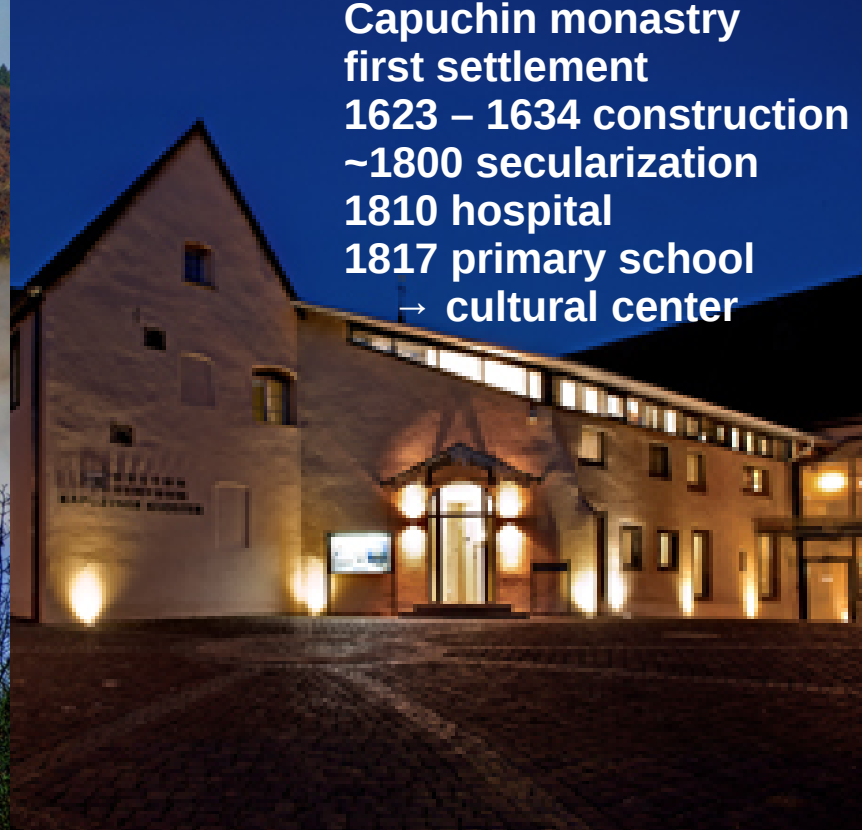


HELMHOLTZ
| ASSOCIATION

Alliance for Astroparticle Physics



Capuchin monastery
first settlement
1623 – 1634 construction
~1800 secularization
1810 hospital
1817 primary school
→ cultural center

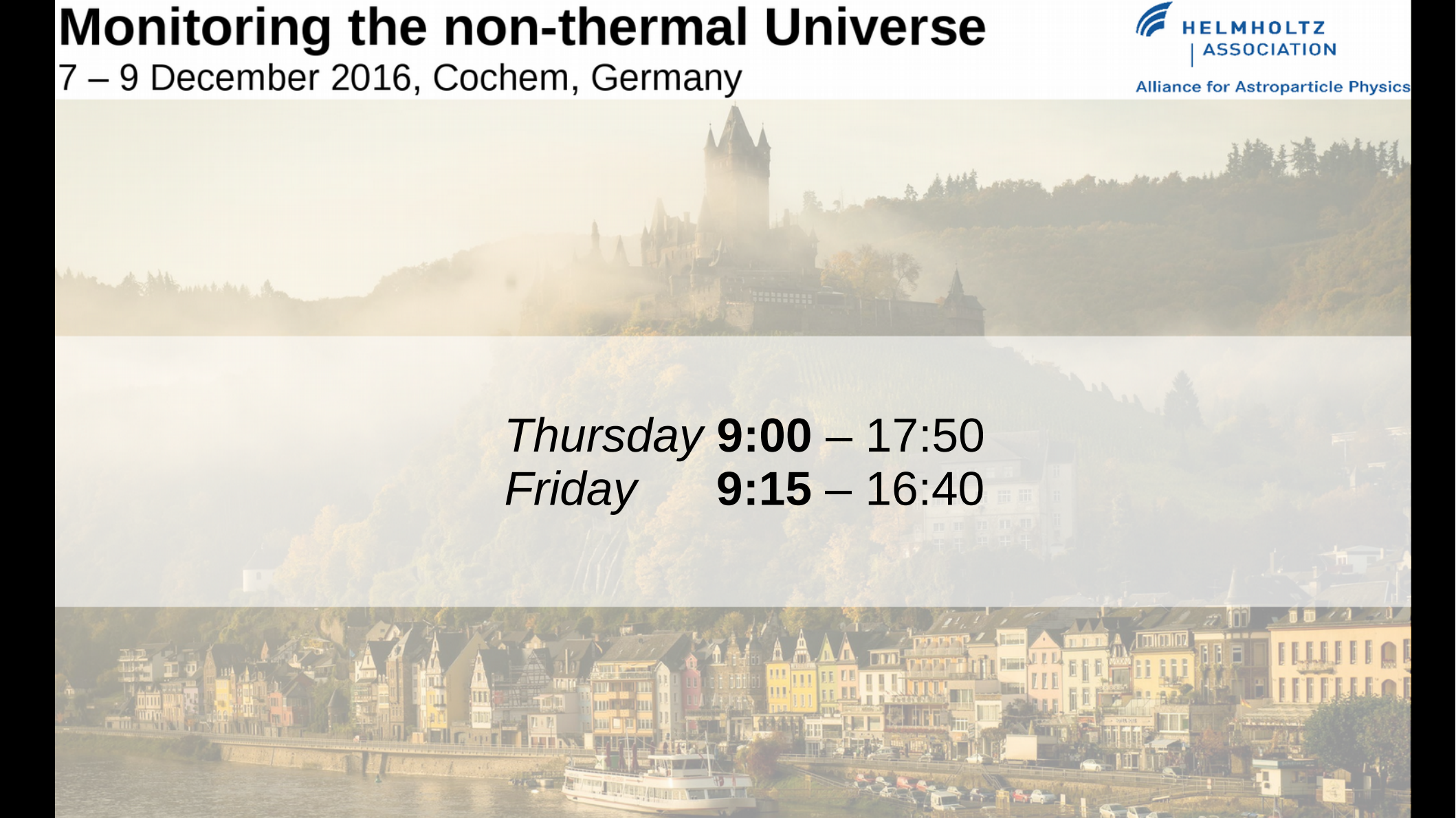


A short history of Cochem

- Oldest known document 20 XII 866, donation to the cloister, including the mansion “in villa cuchema”
- 1132 town ordinances and privileges
- 1689 burned by French troops (Louis XIV)
- 1796 occupied by French, Mosel valley becomes part of France
- 1815 Cochem eventually belongs to the Kingdom of Prussia
- ~1870 restoration of the castle by Ravene
- 1978 castle becomes public property

Monitoring the non-thermal Universe

7 – 9 December 2016, Cochem, Germany



Thursday **9:00 – 17:50**
Friday **9:15 – 16:40**



Conference dinner (Gasterey)



Thursday, 19:30 at the castle entrance

guided tour
entertainment
food

drinks and a mug are included (excl. spirits)

until 23:30

From the cloister



From the market

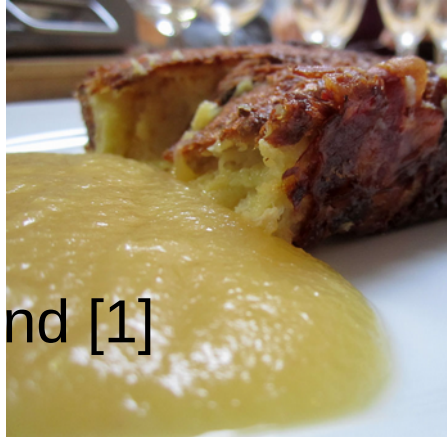


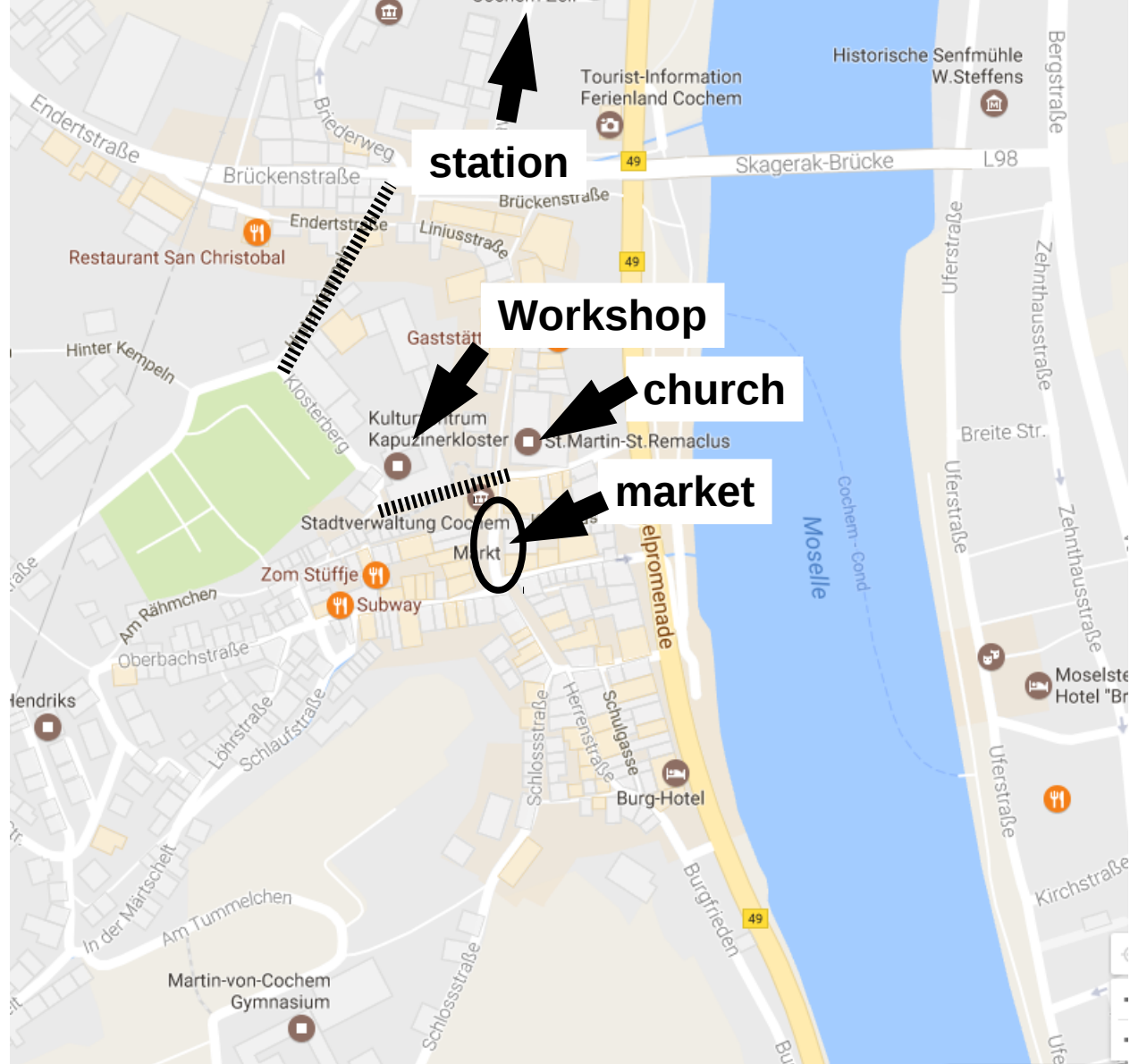
The Mosel valley is a famous wine region!
Traditionally famous for white wines...



Christmas market

- Wed/Thu 11:00 – 18:00
- Fri/Sat 11:00 – 20:00
- Fri 18:30 Döbbekooche Abend [1]
- Sat Castle Christmas
 - 11:00 Guided tour
 - 20:30 Night guard tour
 - 12:30/14:00 Ship tour
 - 14:00 – 17:00 Music





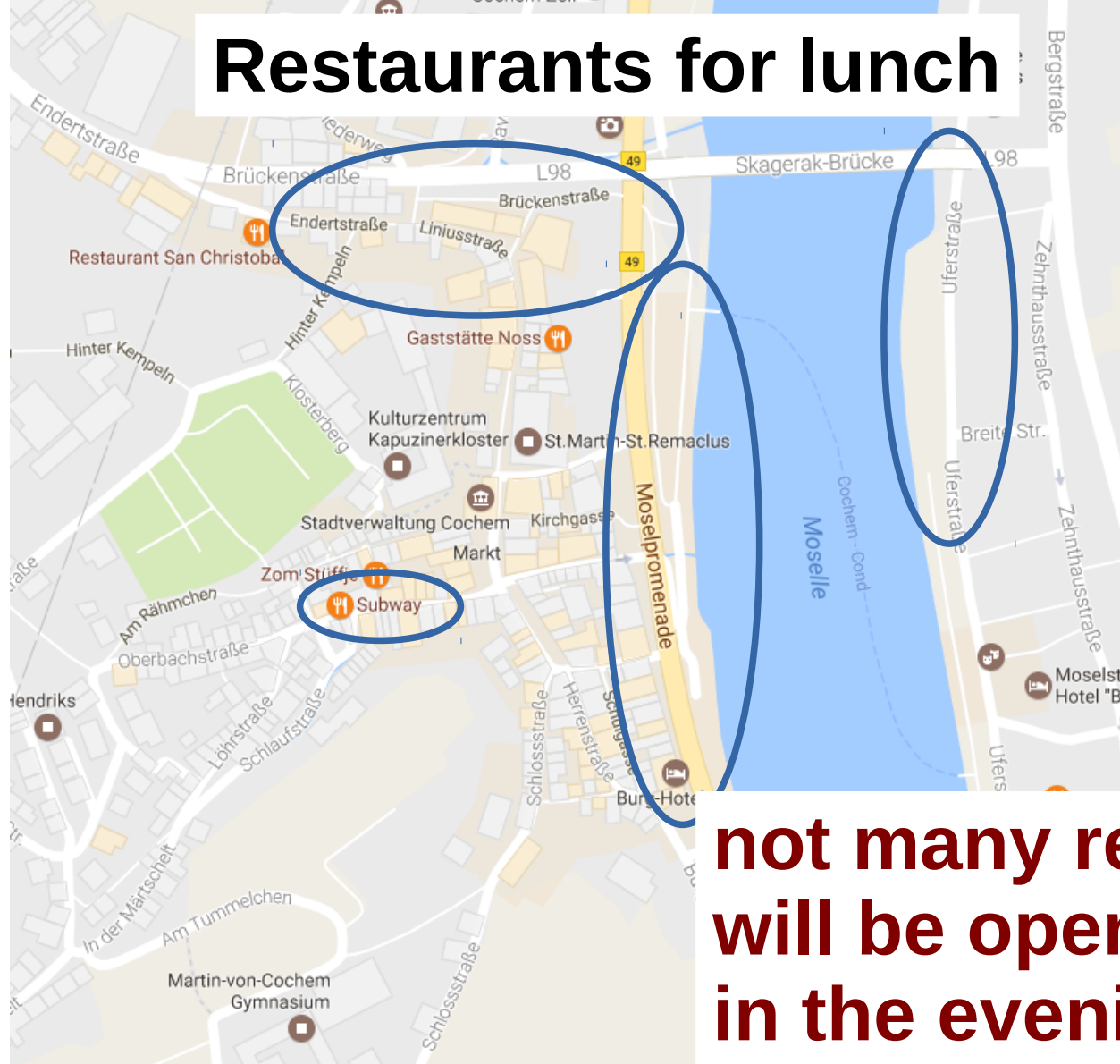
station

Workshop

church

market

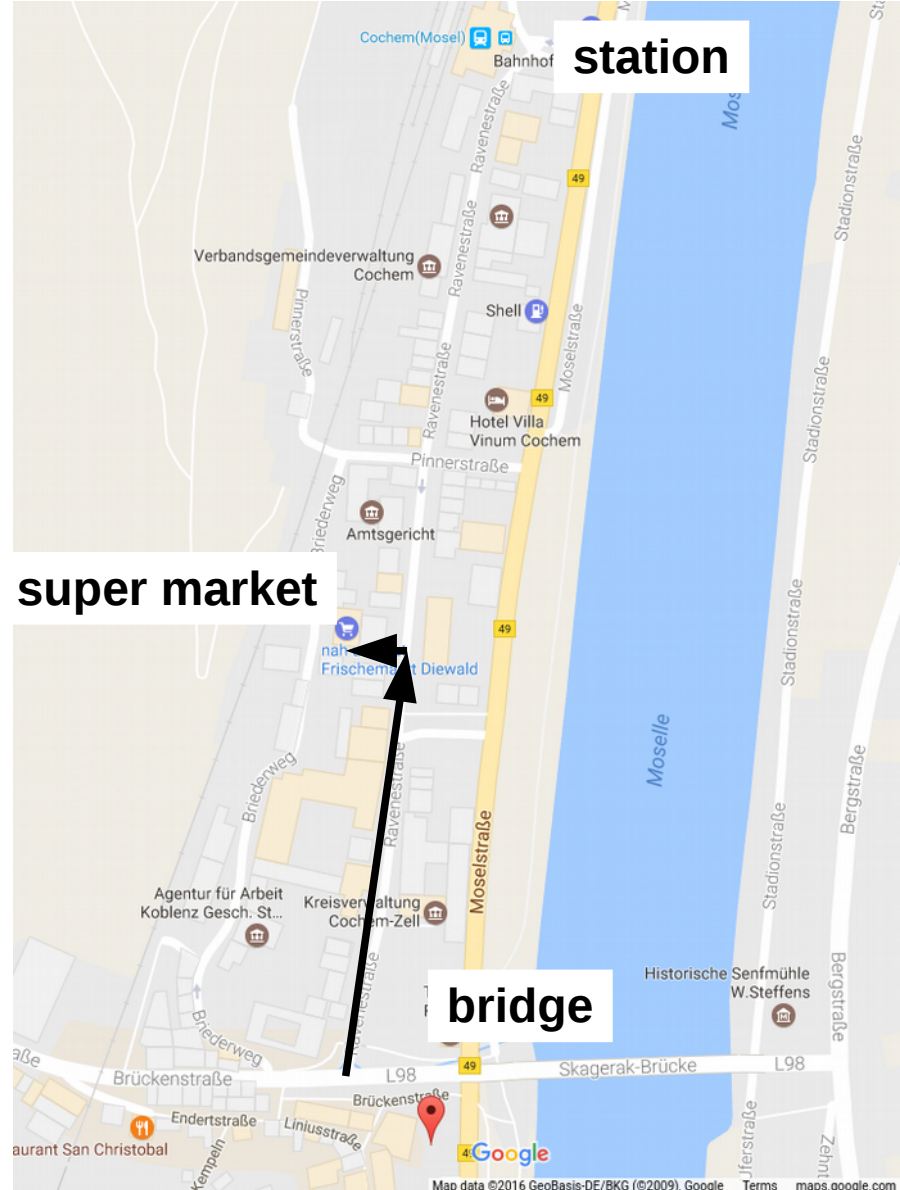
Restaurants for lunch



**not many restaurants
will be open late
in the evening!**



ATMs







Pater Martin Hall:
Two USB for charging
Fleece blankets

Refektorium:
Coffe Breaks / Posters

No guarantee for the wardrobe
→ we can lock the hall
during lunch and coffee breaks



In case of problems or questions



Thomas Bretz
Daniela Dorner
Tobias Herbst
Julian Kemp
Bernd Schleicher
Johannes Schumacher

Wifi in the Pater-Martin Hall
and the Refektorium
(two independent networks)

WiFi
HAP-Workshop

Password
hap-2016