

Labs and learning: How to co-create robust learning ecosystems for urban transformations with intermediaries?

The TRANS-LEARN project

Nachhaltig wirken – Reallabore in der Transformation

Karlsruhe 2–3 June 2022

Jonas Bylund

Urban and regional studies

Department for planning and environment

KTH Royal Institute of Technology

WE CAN NO LONGER
SAVE THE WORLD BY
PLAYING BY THE
RULES
BECAUSE THE RULES
HAVE TO BE CHANGED
WE NEED A SYSTEM
CHANGE, RATHER
THAN INDIVIDUAL
CHANGE
BUT YOU CANNOT
HAVE ONE WITHOUT
THE OTHER
AND SO I ASK YOU TO
PLEASE WAKE UP
AND MAKE THE
CHANGES REQUIRED
POSSIBLE
TO DO YOUR BEST, IS
NO LONGER GOOD
ENOUGH
WE MUST ALL DO THE
SEEMINGLY
IMPOSSIBLE
EVERYTHING NEEDS
TO CHANGE
AND IT HAS TO START
TODAY
GRETA THUNBERG

Co-authors:

Sara Brorström, School of Business, Economics
and Law, Gothenburg University

Andrew Karvonen, Department of Architecture
and Built Environment, Lund University

Jonathan Metzger, Department of Urban
Planning and Environment, KTH Royal Institute
of Technology

Amanda Winter, Department of Urban
Planning and Environment, KTH Royal Institute
of Technology

WE CAN NO LONGER
SAVE THE WORLD BY
PLAYING BY THE
RULES

BECAUSE THE RULES
HAVE TO BE CHANGED

WE NEED A SYSTEM
CHANGE, RATHER
THAN INDIVIDUAL
CHANGE

BUT YOU CANNOT
HAVE ONE WITHOUT
THE OTHER

AND SO I ASK YOU TO
PLEASE WAKE UP
AND MAKE THE
CHANGES REQUIRED
POSSIBLE

TO DO YOUR BEST, IS
NO LONGER GOOD
ENOUGH

WE MUST ALL DO THE
SEEMINGLY
IMPOSSIBLE

EVERYTHING NEEDS
TO CHANGE

AND IT HAS TO START
TODAY

GRETA THUNBERG

2013–2021: JPI Urban Europe

URBAN EUROPE

JPI Urban Europe THE KNOWLEDGE HUB FOR URBAN TRANSITIONS

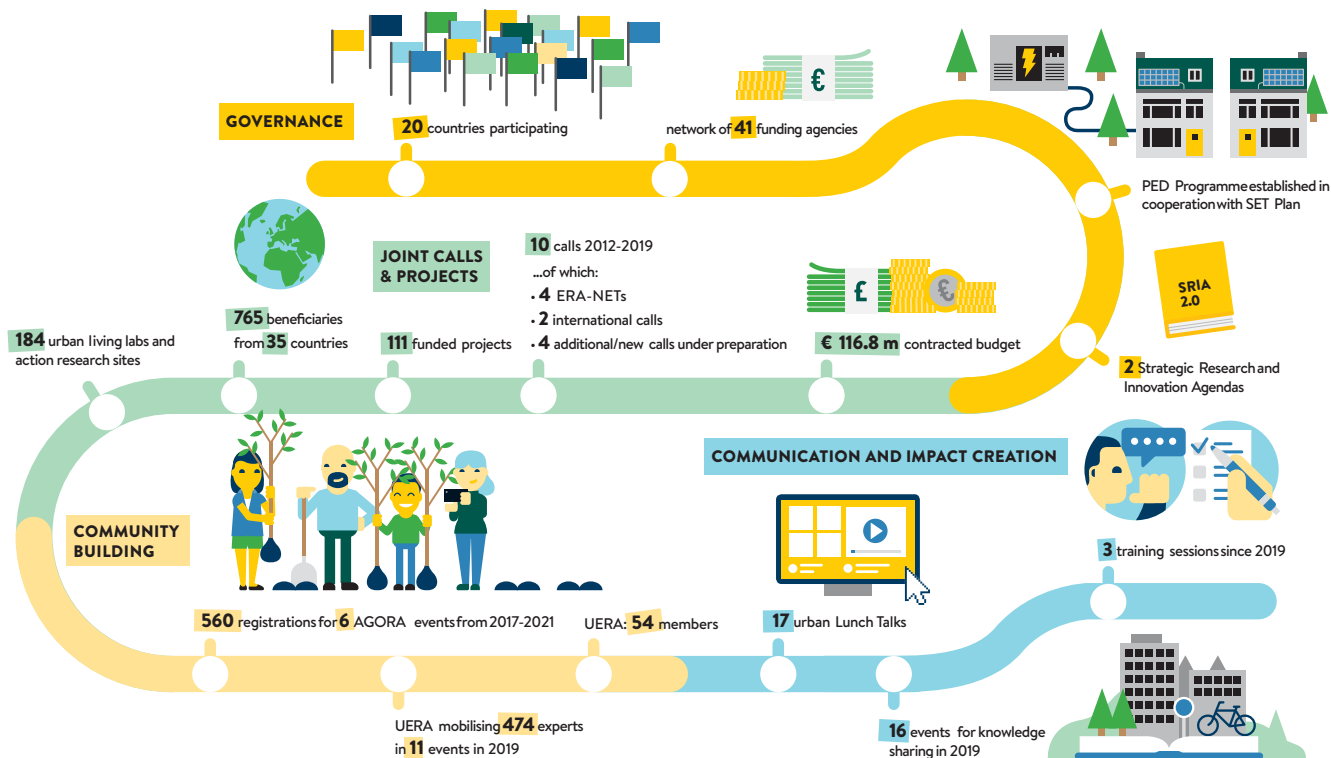
SUPPORT EUROPE'S CITIES IN THEIR TRANSITION TOWARDS A SMART URBAN FUTURE

20 COUNTRIES ACTIVELY SUPPORT JPI URBAN EUROPE AND PARTICIPATE IN ITS ACTIVITIES

The joint programming initiative (JPI) Urban Europe was established in 2010 to address the global urban challenges of today with the ambition to develop a European research and innovation hub on urban matters and create European solutions by means of coordinated research. As of today, 20 European countries engage in JPI Urban Europe and targeted efforts are being made to reach out to new countries in Europe as well as internationally.

JPI Urban Europe welcomes anyone with a drive and concern to improve 21st-century urban life. *Our mission is to develop knowledge, tools and platforms for dialogue on urban transitions.* Our task is to connect public authorities, civil society, scientists, innovators, business and industry to provide a new environment for urban research and innovation. We offer experimental zones and long-term research infrastructures in a broad sense.

- **JPI Urban Europe**
Members: Austria, Belgium, Cyprus, Denmark, Finland, France, Germany, Italy, Latvia, Netherlands, Norway, Slovenia, Sweden, United Kingdom
Observers: Estonia, Poland, Portugal, Romania, Spain, Turkey
- **China**
Joint call under development, relationships with various organisations established (funding agencies, research organisations, urban planning organisations)
- **Argentina, Australia, Brazil, Japan, Mexico, Qatar, USA, South Africa, Switzerland, Chinese Taipei**
Joint call related to Belmont Forum and S&D
- **New Zealand, India, Canada**
Exploration of cooperation opportunities



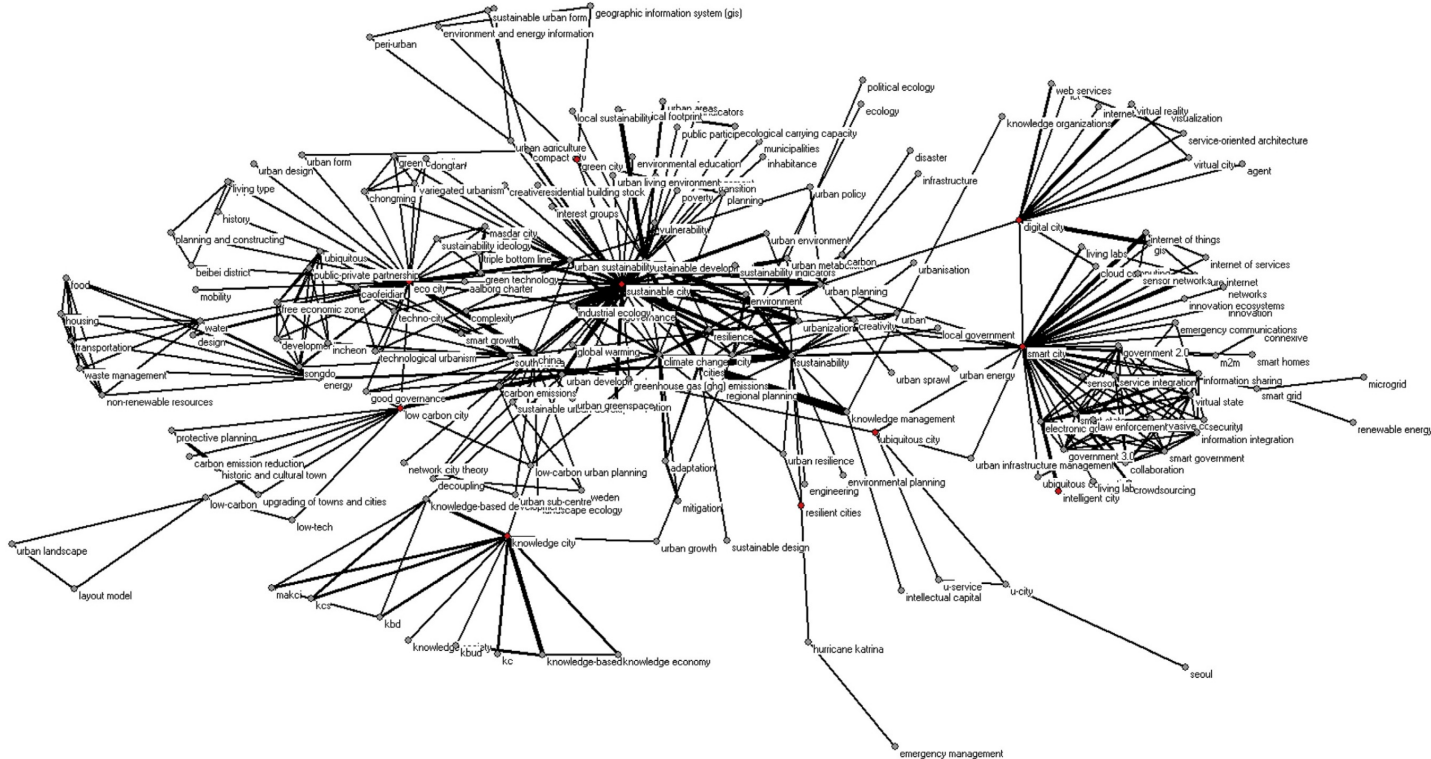
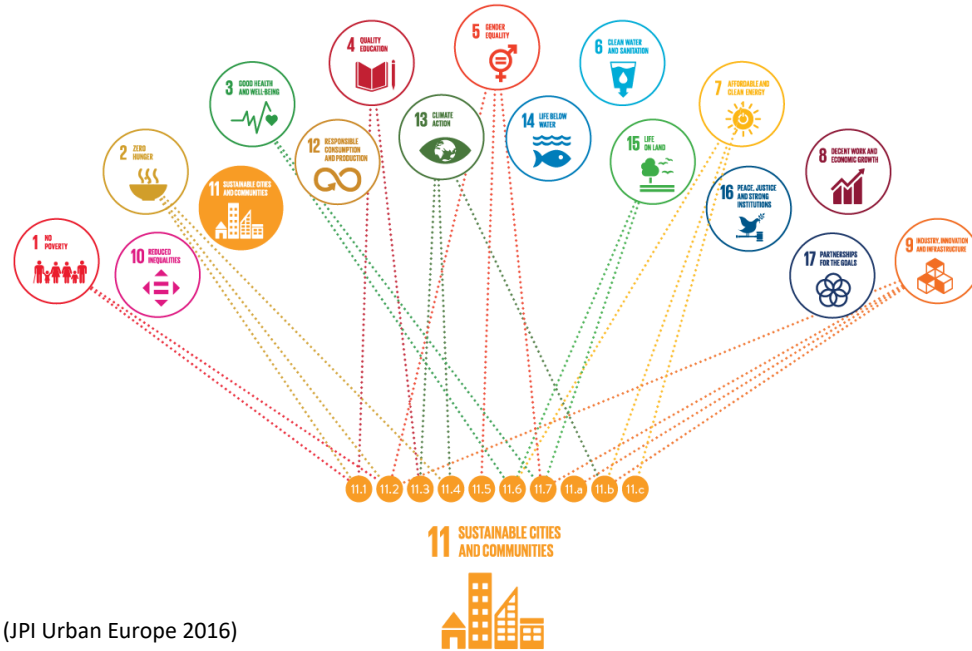


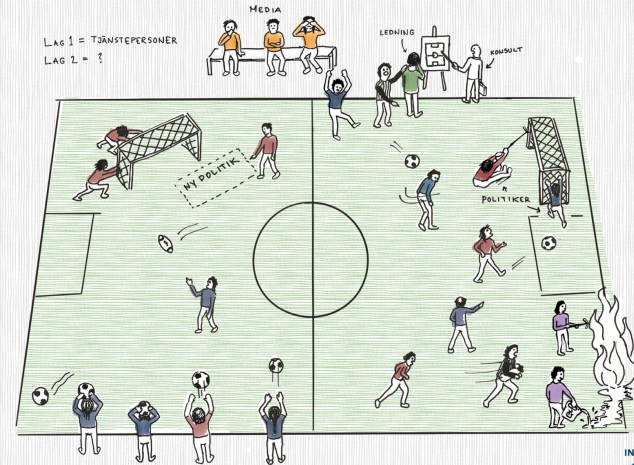
Fig. 5. Network structure of author keywords associated with twelve city categories (minimum of 2 co-occurrences).

Dilemmas and capacities



(JPI Urban Europe 2016)

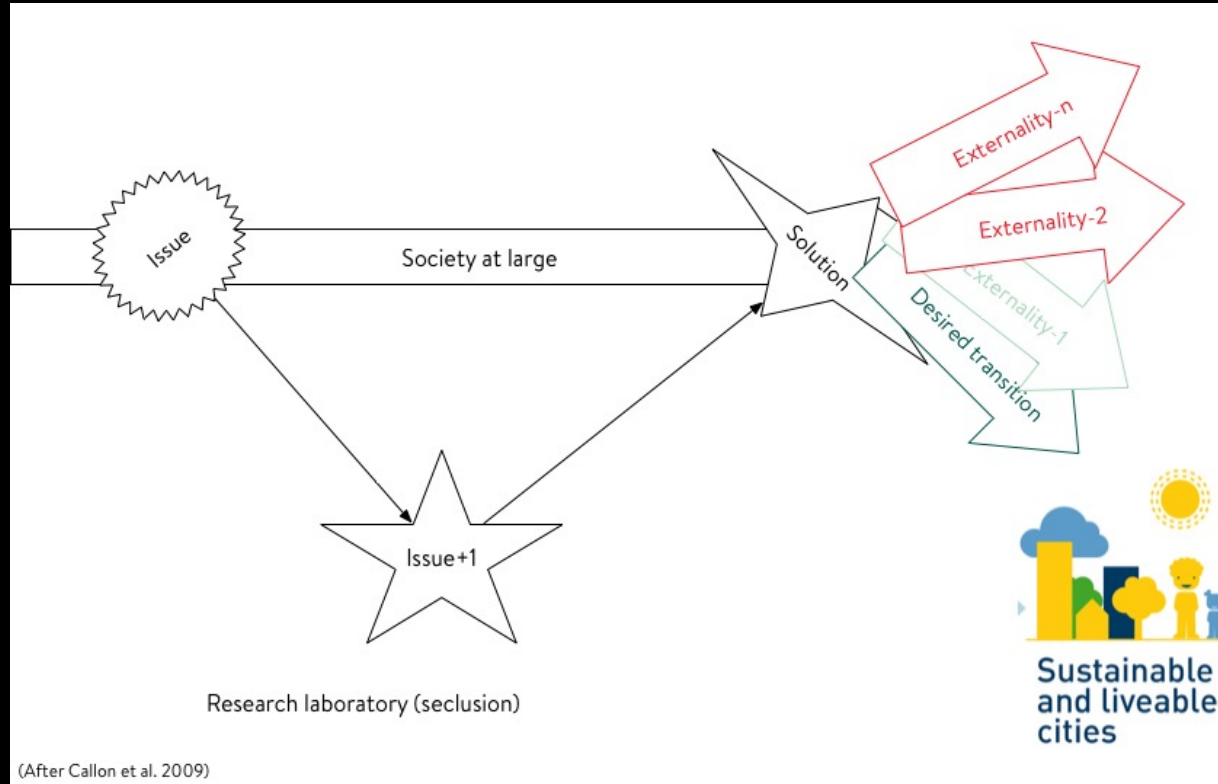
ÄR DIN ORGANISATION MESSI?



INNOVATIONSPLATTFORM
GORÄ

Illustration: Jacqueline Forzelius

The experimental turn



TRANS-LEARN

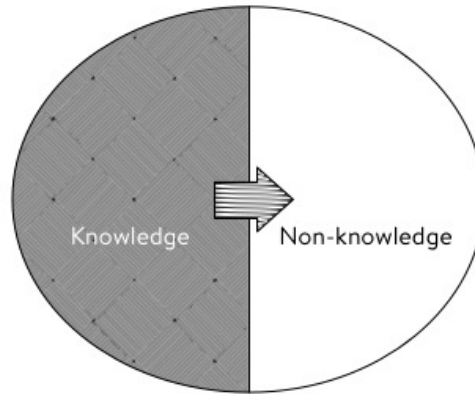
Learning
ecosystems

Learning
infrastructures

Learning
intermediaries

Learning
cultures

Knowledge as a closed uniform system



Information and knowledge systems as composed by a single type of knowledge in a closed uniform space

Knowledge as an open and diverse system



Information and knowledge systems as composed by multiple knowledge configurations in an open space

(after ESF-COST RESCUE Synthesis Report 2011)