

Welcome to GridKa School 2017

Achim Streit

GridKa School
-- 2017 --

```
[you@gks2017]$ make science && ./run  
[you@gks2017]$ echo $(date --date='begin') -- $(date --date='end')  
Mo 28 Aug 2017 14:00:00 CEST -- Fr 01 Sep 2017 12:00:00 CEST
```

KIT – The Research University in the Helmholtz Association

Prof. Dr.-Ing. Holger Hanselka | President

PRESIDENTIAL COMMITTEE



Helmholtz Association

- **Mission:** Systems solutions for grand challenges based on scientific excellence, critical mass and long term research programmes
 - 6 research fields: Energy, Earth & Environment, Health, Aeronautics & Space & Transport, Key Technologies, Matter
- Developing and operating **complex infrastructure** and **large-scale facilities** for the national and international scientific community



KIT Figures and Facts

5 Campuses – **200** ha area

18 Spinoffs and startups

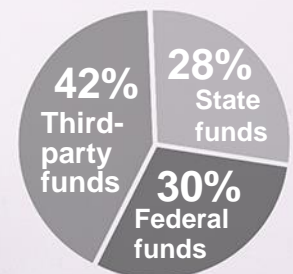
364 Professors and executive scientists

470 Trainees

300 Buildings with a usable area of **450,000** m²

25,000 Students

KIT budget
EUR 860 million



Status: 2015

59 Patent applications

3,000 Doctoral students

9,300 Employees

1,000 International scientists

KIT Research Profiles

Five Discipline-focused Divisions

Division I
Biology,
Chemistry, and
Process
Engineering

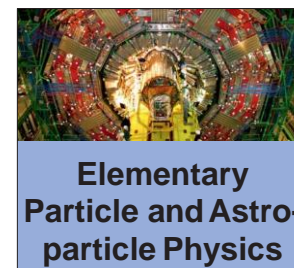
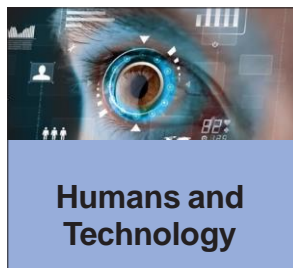
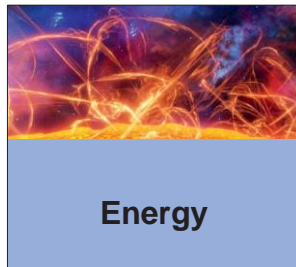
Division II
Informatics,
Economics, and
Society

Division III
Mechanical and
Electrical
Engineering

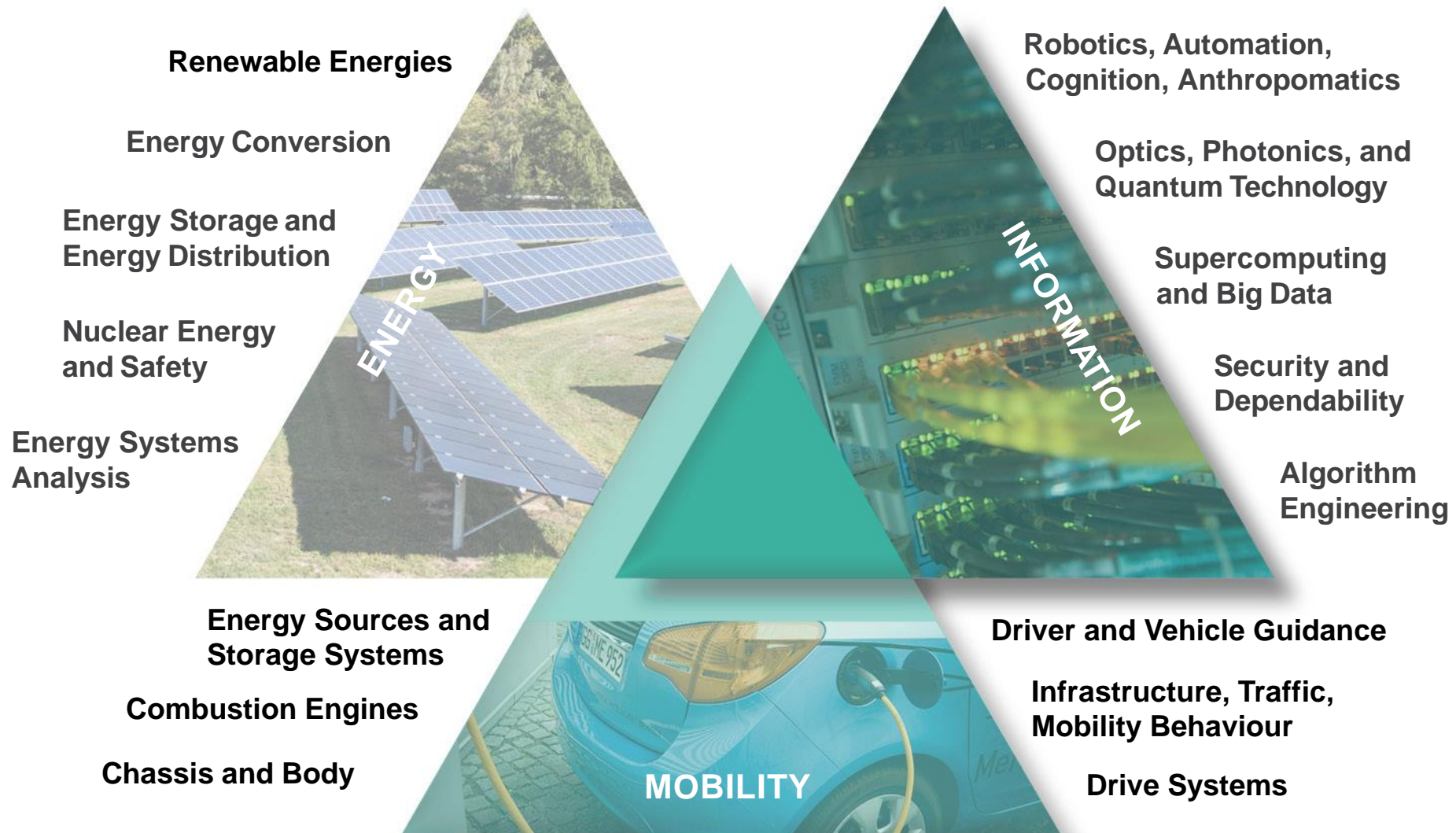
Division IV
Natural and
Built Environment

Division V
Physics and
Mathematics

Seven Interdisciplinary KIT Centers



Topics Sharpening the Profile of KIT



Big Research Infrastructures at KIT



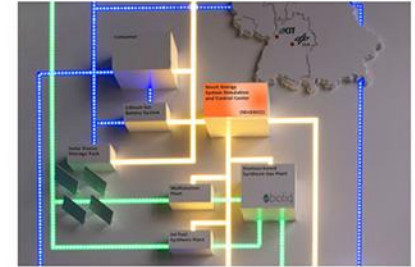
**Acoustic Four-wheel
Roller Dynamometer**



**ANKA Synchrotron
Radiation Facility**



**Biomass to Liquid
(bioliq®)**



EnergyLab 2.0



**European Zebrafish
Resource Center**



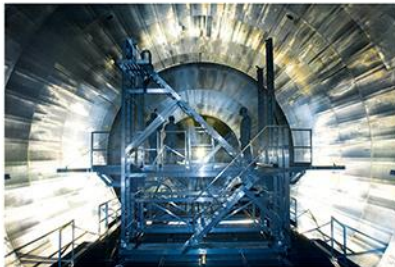
**High-performance
Computer for Research**



**Grid Computing Centre
Karlsruhe (GridKa)**



**Karlsruhe Nano Micro
Facility (KNMF)**



**Karlsruhe Tritium
Neutrino Experiment**



**Theodor Rehbock River
Engineering Laboratory**



**Vehicle Efficiency
Laboratory**



AIDA Cloud Chamber

Steinbuch Centre for Computing (SCC)

Steinbuch Centre for Computing



Who are we?

Institute in KIT with
service tasks

Which demands do we satisfy?

- Computational Science & Engineering (CSE)
- Data-Intensive Science (DIS)
- For users in KIT, BaWü, Germany and international

What do we do?

- Research, education and innovation in Supercomputing, Big Data and secure IT-federations
- Operation of large scale research facilities
- Operation of basic IT services

“Services for Science – Science for Services”

SCC IT-Services

- **Campus-wide IT-services** for > 25.000 students and > 10.000 employees
- **Networks:** 1700 switches/router, 1000 WLAN APs
- **Server virtualisation:** 800 virtual servers
- **HW server:** ca. 400 servers in 80 racks
- **Backup/archive:** 3000 Clients, 6 Libraries, 30000 Slots
- **E-Mail:** 45.000 mail boxes, 450.000 incoming mails/d, 200.000 outgoing mails/d
- **Databases:** ca. 1250 MS-SQL/Oracle DB
- **Web:** 600.000 web pages, 500 virt. web servers
- **Computer rooms:** 400 PCs, 250 courses
- **Portal for students/e-learning:** 8.000 users/d, 26.000 users/a, 8.300 active courses



Enabling Computational Science & Engineering (CSE)

■ Operation of **HPC systems**

- **ForHLR:** Tier-2 system in Germany
in total 34.000 cores
total peak performance > 1,4 PetaFlop/s
peer-review access for users in BaWü und D
- **bwUniCluster:** Tier-3 system in the state BaWü
HPC capacity system with 18.300 cores
shareholder ownership with all 9 state universities

■ **Joint R&D** with scientific communities & KIT institutes

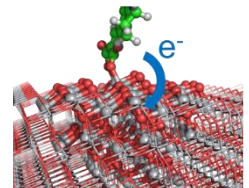
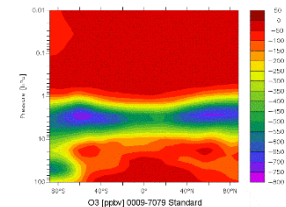
- Application optimisation, scaling, model enhancements
- Simulation Labs in HGF Programme SBD

■ **HYIGs** MBS + FiNE

■ **Innovation drivers** for SMEs

■ **Architect** for HPC environment in BaWü

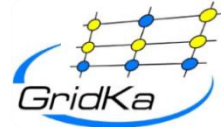
■ **+ CSMM-Prof.**



Enabling Data-Intensive Science (DIS)

■ Operation of **GridKa**

- German Tier-1 in WLCG for an international community



■ Operation of the **Large-Scale Data Facility**

- Multi-disciplinary data centre for climate research, systems biology, energy research, etc. in BaWü



■ **Joint R&D** with scientific communities

- Generic data management research
- Data Life Cycle Labs in Helmholtz Programme SBD



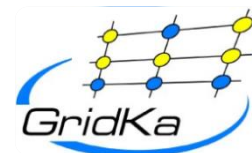
■ **Innovation driver** for SMEs, big industry und start-ups



■ **Active role** in national and international projects & initiatives

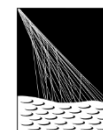


GridKa



■ German Tier-1 High Energy Physics and Astroparticle Data & Analysis Centre

- Supports users from all LHC experiments
- Belle II, Pierre-Auger, several small communities



■ Close interaction with users through experiment representatives and governance

■ Joint R&D (PhDs, EXC) for the scalability challenge (e.g. HL-LHC)



■ Resources

- Computing: ~ 11.000 physical cores
- Disk: 20 PB (netto)
- Tape: 30 PB (used)
- 100 Gbit/s network connectivity to LHCOPN, LHCONE

■ Among the largest and best performing T1s

■ Annual international GridKa School

- > 1500 participants in 14 years!

