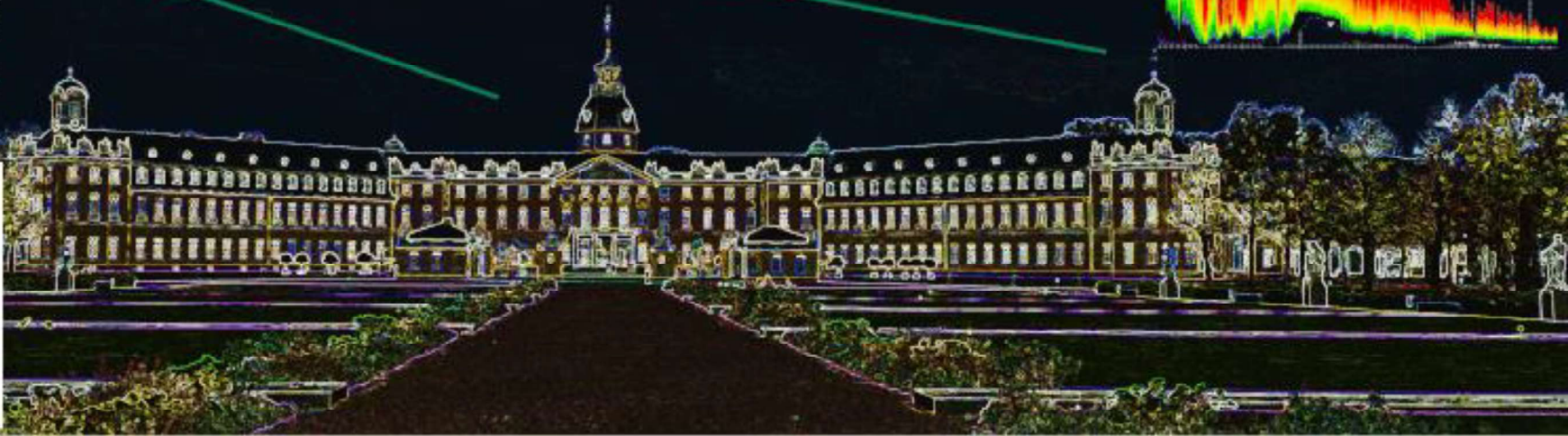
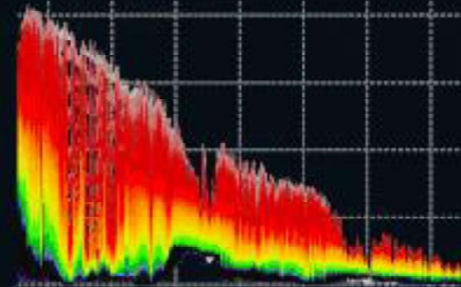


13th Atmospheric Limb Workshop

2 - 6 June 2025

Karlsruhe, Germany



Logistics

Venue

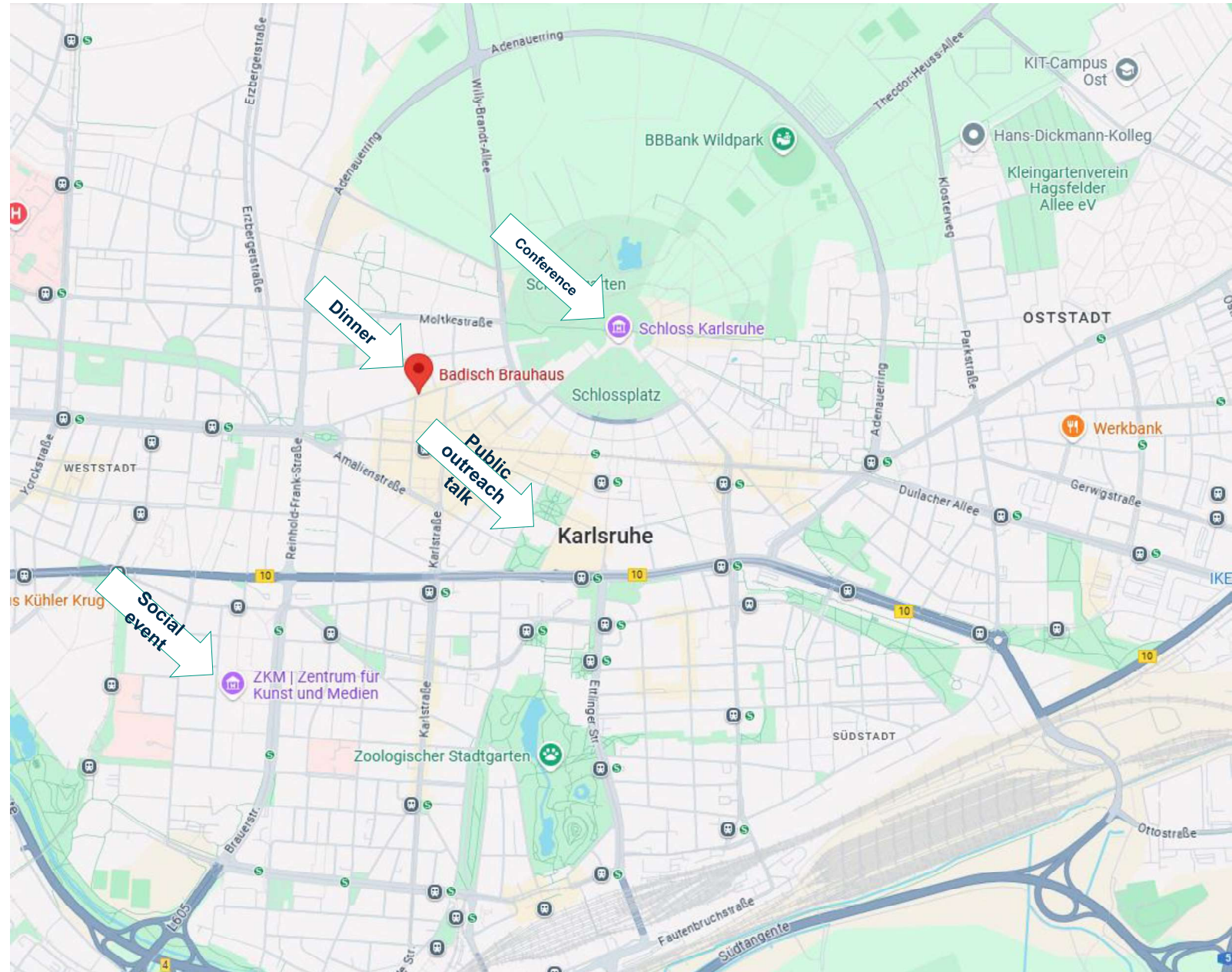


Venue: Gartensaal Schloss Karlsruhe

- Lunch and coffee breaks: provided by the conference at “Turmzimmer”
- You can visit the Badische Landesmuseum in the castle if you wish. Please tell the front desk of the museum that you are part of the workshop
- <https://www.landmuseum.de/en/museum>
- Castle closes at 6 pm sharp, by this time we should have left the premises.



Directions



Contributions

- Talks:
 - in presence: please provide on USB sticks right before sessions,
 - online: you will share your screen, but to be on safe side please send a pdf copy of your input to limb2025@imk-asf.kit.edu on the day before your talk
- Posters:
 - will be displayed the whole week (or as long as you are present at the conference), dedicated sessions are on Monday and Thursday.

Group photo

- Group photo will be taken on Tuesday at 16:00 in the beginning of PM2 session.
- We will try to include the online participants

Social event at ZKM

- “Centre for Art and Media” visit on **Wednesday** (Website: <http://zkm.de/>)
- Guided tours starting at 14:00 (22 Persons in English, 22 Persons in German)
Please arrive at the museum at **13:45**
- **»zkm_gameplay. the next level«** is the computer game platform of ZKM. The exhibition invites visitors to engage in informative and creative exchange – and, of course, to play games. The exhibition is aimed at gamers of all ages, but also at visitors who have little experience with computer games.
- Afterwards you can visit the exhibition on your own
- Please register on the conference registration desk today!

ZKM 
Zentrum für
Kunst
und Medien
Karlsruhe




Social event at ZKM

- Exhibition for 200 years of KIT
- Also an online exhibition:
<https://www.100objekte.kit.edu/main/>



ZKM 
Center
for Art and
Media
Karlsruhe

► Shop Newsletter Press    

Visit Program Research ZKM

/// Exhibitions /// 200 Years of KIT | 100 Objects. Parts of a Whole

Exhibition

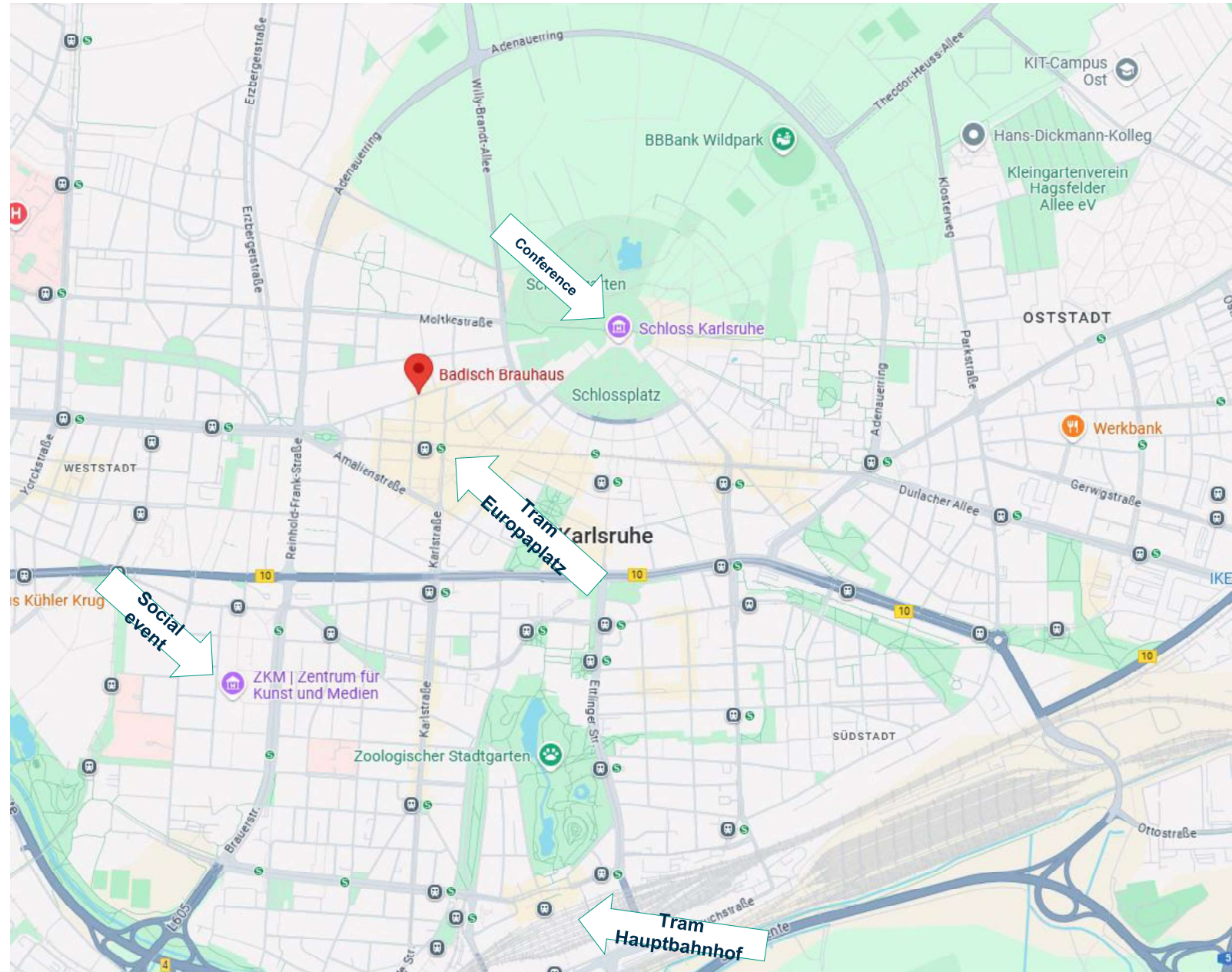
200 Years of KIT | 100 Objects. Parts of a Whole

Selected
Objects from
KIT's History

A photograph of a white van parked in a snowy forest. The van's cargo area is filled with a complex arrangement of mechanical and electronic components, including wires, tubes, and what appears to be a small engine or pump system. The license plate on the van reads "KA 3 JJ 260".

ZKM

- <https://zkm.de/en/directions>
- Lorenzstraße 19
- Tram line 2 to the stop »ZKM«
- Buy a ticket before boarding the tram!



Conference Dinner at Badisch Brauhaus

- After the social event at ZKM: Wednesday 19:00
- <https://www.badisch-brauhaus.de/>
- Close to tram station “Europaplatz”
- Please register on the conference registration desk today!



Sponsors

We thank the European Space Agency (ESA) and the German Research Foundation for their generous support of our conference!



Funded by



Deutsche
Forschungsgemeinschaft

German Research Foundation