

# Campus-Wide License Management Shibboleth

MathWorks

# Identity Management Overview

- Integration with Shibboleth for Identity Management
  - Shibboleth is open source software that allows a Service Provider (MathWorks) to leverage an Identity Provider's (University) identity management systems to verify users' status.
- MathWorks is a participant in:
  - InCommon: US Federation
  - eduGAIN: Global Interfederation
- InCommon and eduGain federations, through its trust agreements and federating software, allows identity providers to manage user privacy and information exchange.

# Identity Management Workflow - Attribute Assertion

MathWorks leverages the attribute assertion using Shibboleth as part of the InCommon Federation. In order to support this workflow, the release of the following attributes are required:

- eduPersonPrincipalName or eduPersonTargetedId
- eduPersonScopedAffiliation

**eduPersonPrincipalName/eduPersonTargetedId** is used as a unique identifier for the user and **eduPersonScopedAffiliation** to determine if the user should be granted access.

The following attributes are also used to assist with the user's creation of a MathWorks Account, but they are not required to be submitted via Shibboleth:

- mail
- givenName
- sn

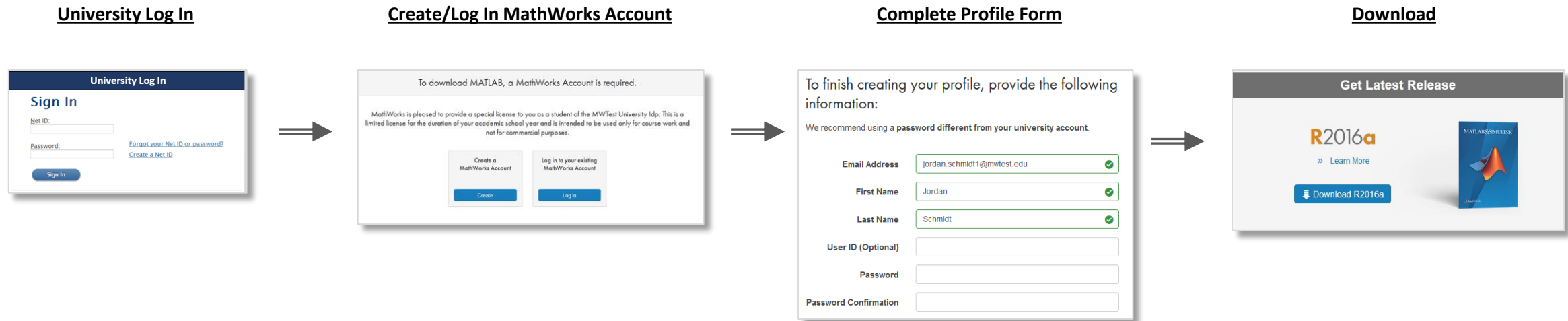
A user can manually enter these three if they are not passed.

# End User Workflow – License Association

Workflow for End Users gaining access to the Campus-Wide license.

- Users are guided through MathWorks Account creation and brought directly to Download area of website.

User begins by clicking on **Identity Mgmt URL** and then performs following steps:

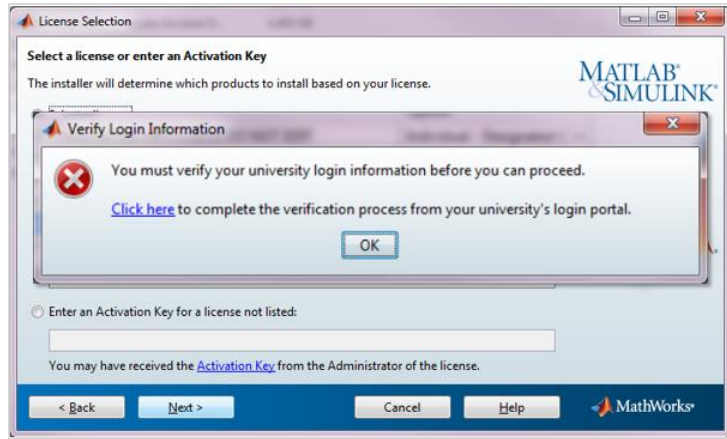


# End User Workflow – Installation/Activation

Identity Authentication check during installation/activation limits usage to university users (faculty/staff/students/employees).

- Users who leave the university will not be able to perform new installations/activations.

## Activation Requires Verification



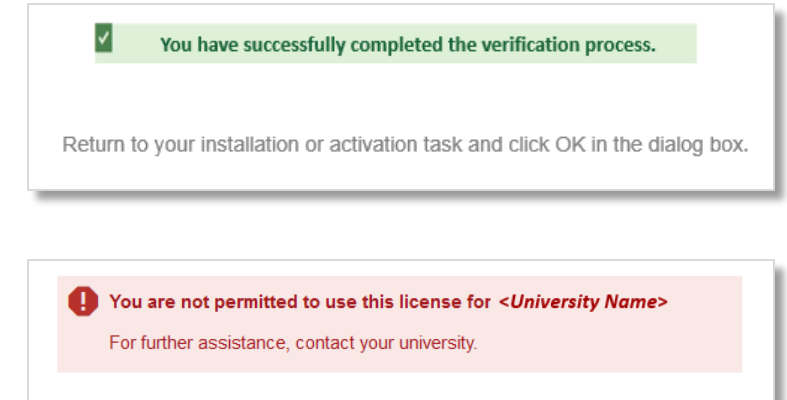
## University Log In

The screenshot shows the 'University Log In' sign-in form. It has a dark blue header with 'University Log In' in white. Below the header, the text 'Sign In' is in blue. There are two input fields: 'Net ID:' and 'Password:'. To the right of the password field are two links: 'Forgot your Net ID or password?' and 'Create a Net ID'. At the bottom is a blue 'Sign In' button.

valid  
university  
user

not valid  
university  
user

## Verification Message



# Identity Management Checkpoints

Users are required to verify their University account when performing the following actions:

- **Associate** to Campus-Wide License
- **Install** Campus-Wide License
- **Activate** Campus-Wide License

NOTE: Once MATLAB is installed and activated on a users' computer, they will not be prompted to verify their university account at MATLAB startup. However, when the license expires, the user will be prompted to verify their university account if attempting to re-activate.