

Sino-German Summer School on Recent Advances in Material Development

15.-19. July 2019 KIT Campus North

Information Guide



Content

1. Travel Documents.....	3
2. Transport from Frankfurt Airport to Karlsruhe	4
3. Stay in Karlsruhe.....	6
4. Explore the surrounding Area	8
5. Emergency Numbers and Basic German	9

1. Travel Documents



Application for Schengen Visa

Travelers from non-EU-countries require a visa for a stay in Germany. For short stays not exceeding 90 days in any 180-day period, you need to apply for a so-called “Schengen visa”. Since February 2019, the Embassy of the Federal Republic of Germany has outsourced the visa application centers (VAC) to the service partner VFS.GLOBAL. VFS.GLOBAL collects the applications, transfers them to the German Embassy for processing and hands out the visa to the applicants. A service fee of 15 Euros will be charged. Applications are accepted three months in advance of the planned trip at the earliest. Due to legal regulations, the application must be submitted in person (e.g. for the registration of fingerprints). It is necessary to schedule an appointment via the scheduling system. After the admission of the complete and correct application data, the processing time takes up to 15 work days.

You will need to apply for a “School Student Exchange”-visa. Visa fees are waived for students who undertake the trip for the purpose of study or training. KIT’s International Office will provide an invitation for the Summer School, which you need to include into your application data.

Further information on visa application:

<https://china.diplo.de/cn-zh/service/visa-einreise/schengenvisum/1343246?openAccordionId=item-1343250-2-panel>

<https://www.vfsglobal.cn/Germany/China/English/index.html>

If you lose your passport during the stay in Germany, please report to the police and contact the consulate general in Frankfurt for reissuing of the passport or temporary identification documents. For eventualities please prepare copies of your passport and/or other identification documents.

Consulate general of the People’s Republic of China	
Address	Stresemannallee 19-23, 60596 Frankfurt am Main
Telephone	+49 69 75085548
Application form	http://cs.mfa.gov.cn/zlbq/bgzi/hzlxz/P020110624390097873774.pdf

2. Transport from Frankfurt Airport to Karlsruhe

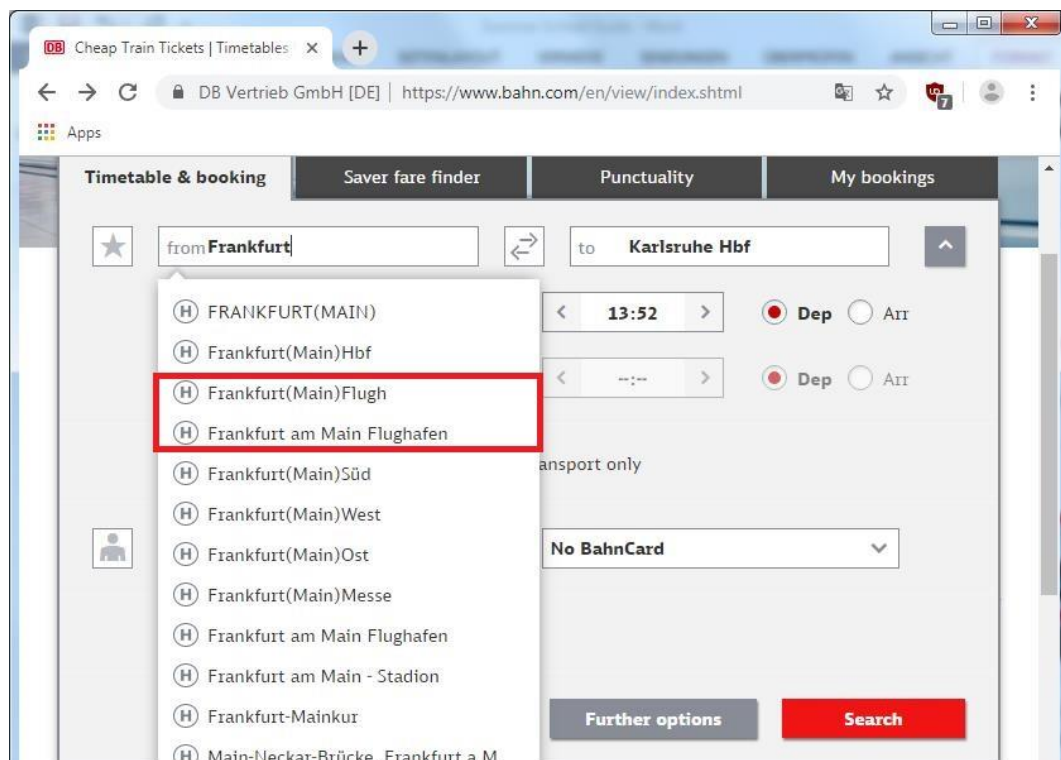
Having arrived at Frankfurt Airport, the quickest and most direct way to Karlsruhe is via ICE (Inter City Express). Tickets can be purchased inside the *DB Reisezentrum* (Deutsche Bahn, i.e. German Railways Travel Center) or at any *DB vending machine* on level 3 (map of the airport train station on the following page).



DB Vending Machine

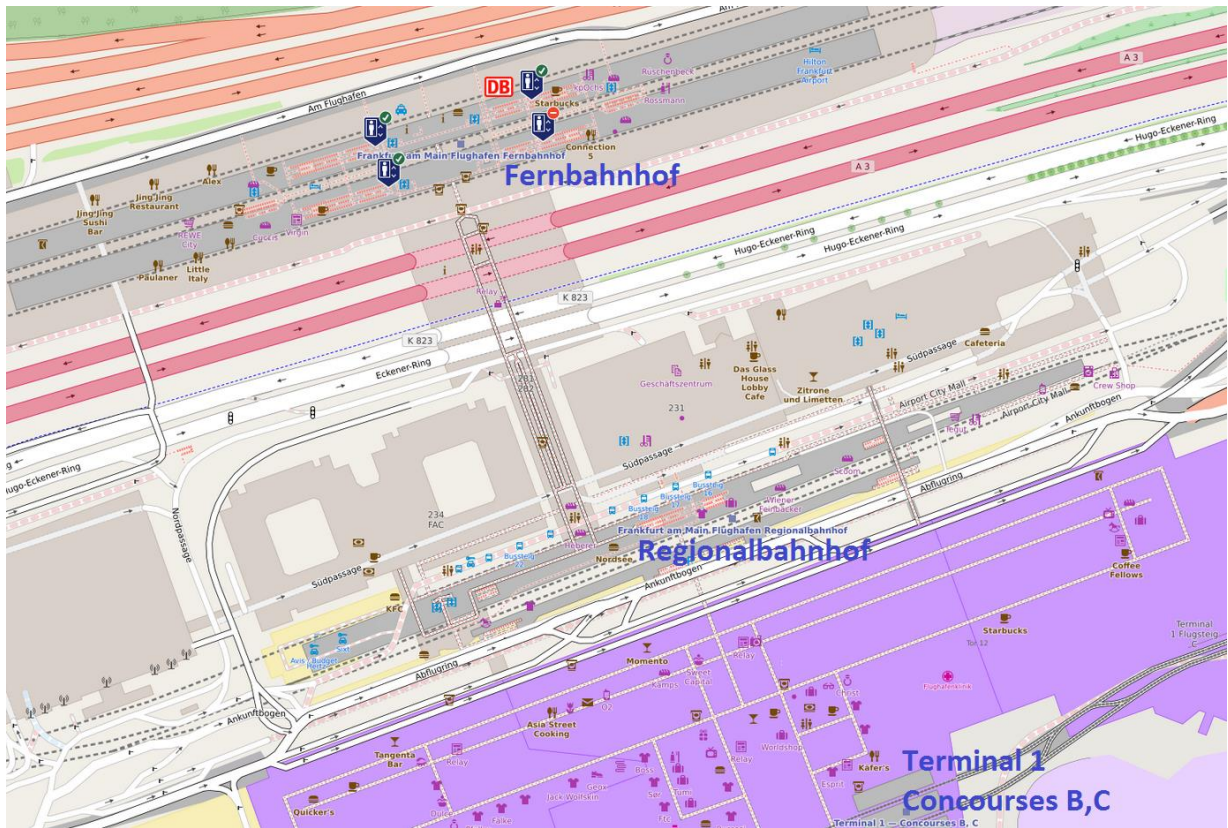
The starting station is “Frankfurt(Main)Flugh” (usually filled in automatically) and the destination is “Karlsruhe Hbf”. The trip takes about one hour and costs about 42 Euros. You can obtain information in the *Reisezentrum*, on the local postings/screens and on the website:

<https://www.bahn.com/en/view/index.shtml>

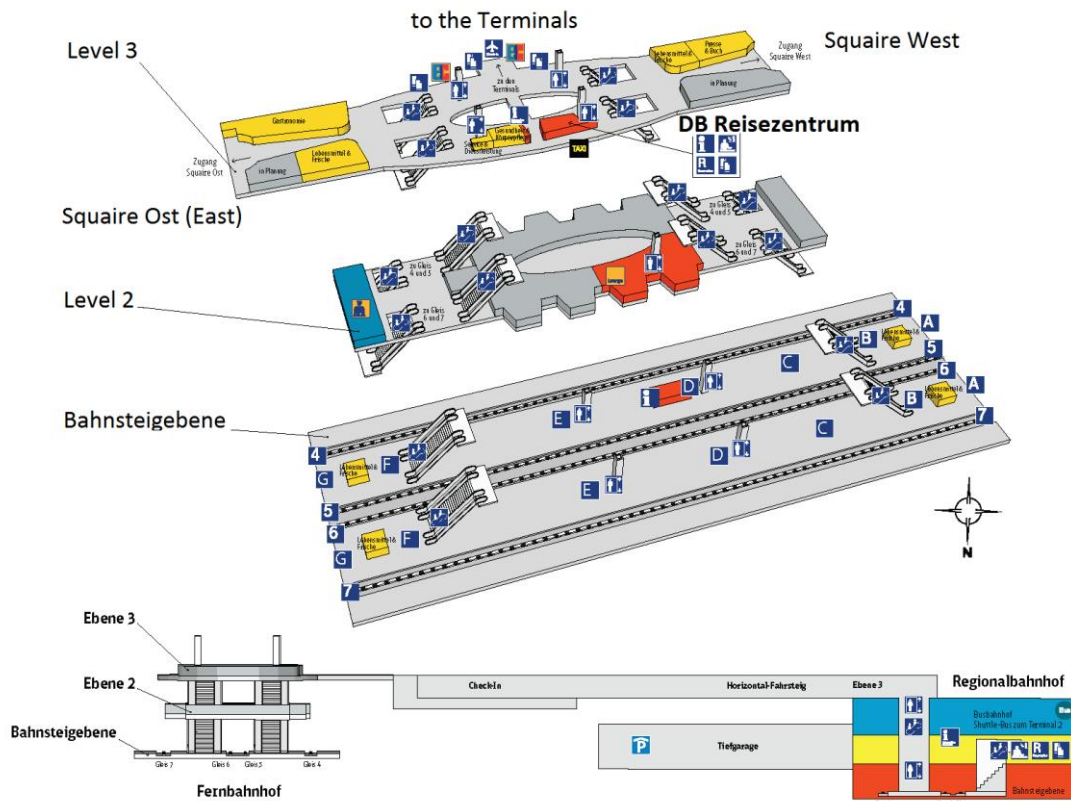


Website of the Deutsche Bahn (German Railways)

The ICE stops at the *Fernbahnhof* (long distance train station) which is situated on the deepest level *Bahnsteigebene* of Terminal 1. Do not confuse the *Fernbahnhof* with the *Regionalbahnhof* (train station for regional trains), which is on the opposite site of the *Bahnsteigebene*.



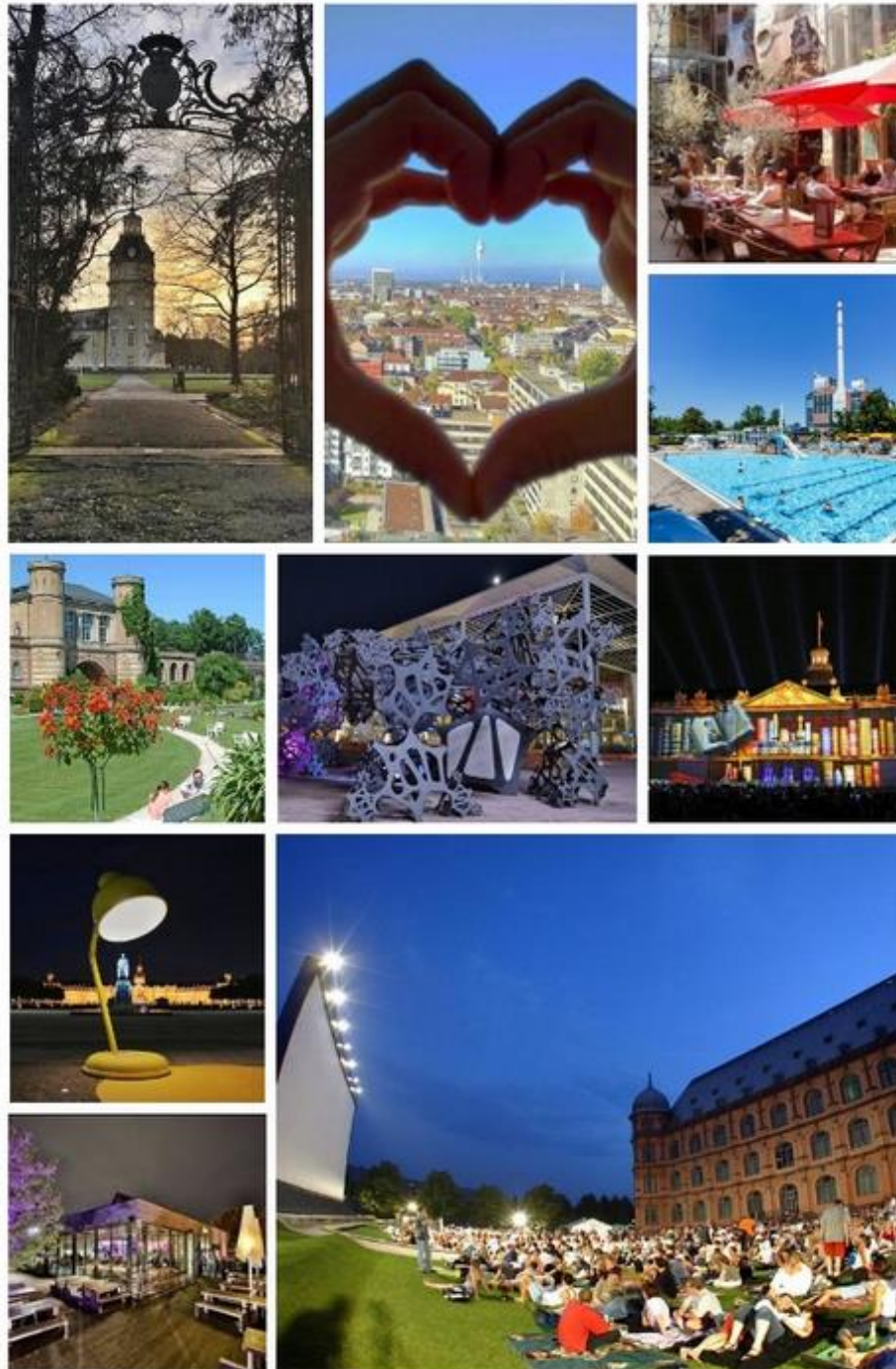
Fernbahnhof **Frankfurt/Main Flughafen**



Location and Layout of Frankfurt Airport Train Station

3. Stay in Karlsruhe

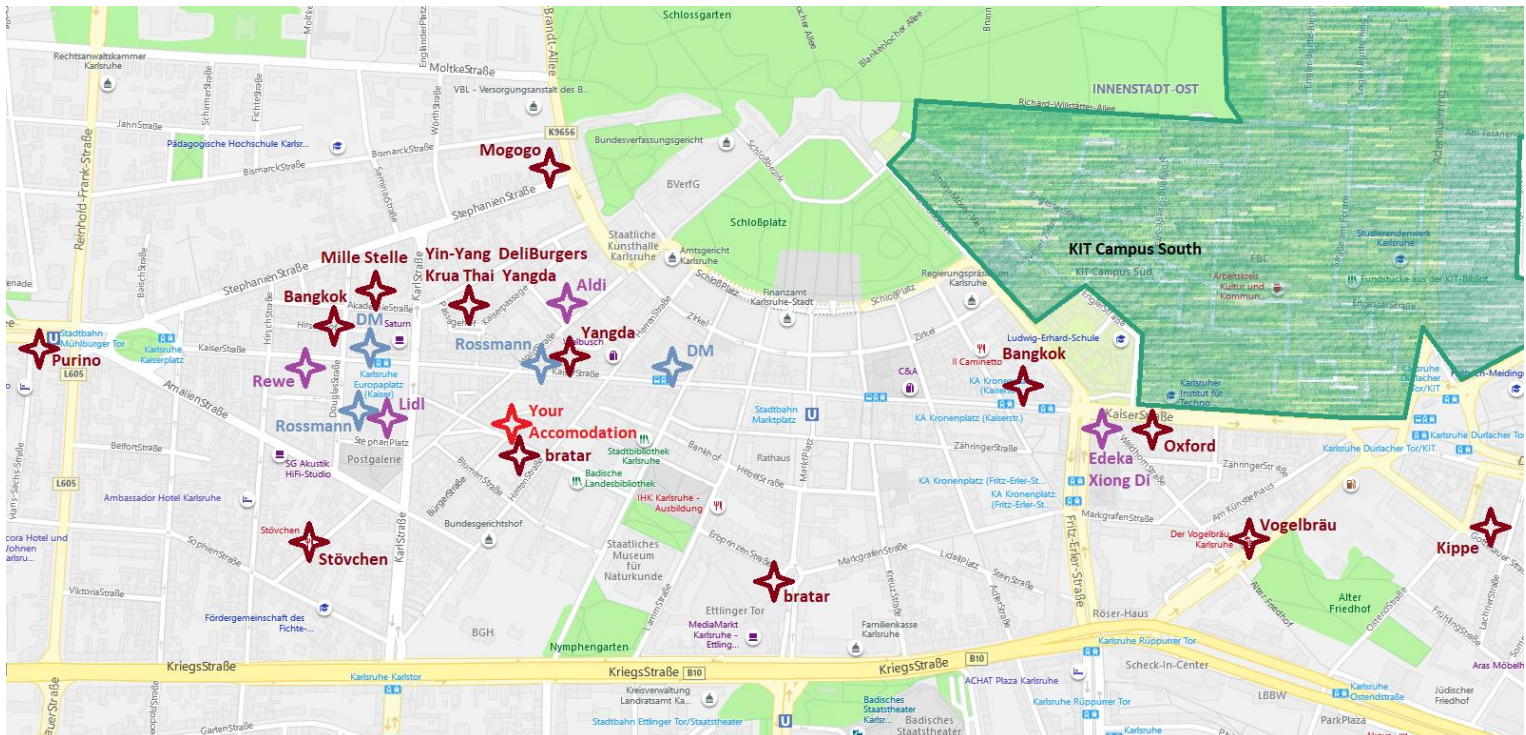
Karlsruhe is founded and built as an ideally planned “fan-city”: embedded in the Hardt forest to the north, the neo-classic city center is marked by streets radiating from the palace to the south. The capital of Baden offers recreational greenery (e.g. palace garden), cultural institutions (e.g. ZKM Center for Art and Media) and events (e.g. palace illumination, open air cinema).



If you need any daily necessities, you can shop in supermarkets in the city center. All-rounders are Aldi, Lidl and Penny (discounter), Rewe and Edeka (“normal” price range) and Alnatura and Füllhorn (organic food products). DM and Rossmann are drugstores that offer more choice in toiletries and non-prescription drugs. The Chinese supermarkets in Karlsruhe city center is “Xiong Di” at Kronenplatz underneath the Edeka.

While the Summer School will provide lunch, dinner is left to your own choosing. For your evenings out in Karlsruhe, we can recommend some restaurants that offers specialties at student-friendly prices.

Typical and well-attended student pubs with German food are “Die Kippe” and “Stövchen”. The “Vogelbräu” entices with local food plus self-brewed beers. Another famous students’ restaurant is the “Oxford” just across the street from the KIT Campus South with western cuisine, burgers and daily specials at killer prices. “DeliBurgers” is specialized in burgers and therefor offers a more exquisite choice in a smaller locality. Another great burgers and European/American place is “bratar”. There you will find enticing dishes in amazingly big servings and a lower-priced midday menu. Slightly expensive but very popular and delicious are the Italians “Mille Stelle” (great pizzas) and “Purino” (creative pasta). Also a bit pricier but recommendable is the African restaurant “Mogogo” that presents mild to very spicy meat and vegetable dishes. If you want to go for Thai food, you can enjoy hearty meals at “Bangkok Foodland” or nice fish specialties at “Krua Thai”. Karlsruhe also has a range of Chinese restaurants in stock. The probably best known Chinese in town is “Yangda”. The nearby “Yin-Yang” provide homier food and self-made noodle soups.



LOCALITY	ADDRESS	NEAREST TRAM STOP
DIE KIPPE	Gottesauer Str. 23, 76131 Karlsruhe	Gottesauer Platz, Durlacher Tor
STÖVCHEN	Waldstr. 54, 76133, Karlsruhe	Europaplatz
VOGELBRÄU	Kapellenstraße 50, 76131 Karlsruhe	Durlacher Tor
OXFORD	Kaiserstraße 57, 76131 Karlsruhe	Kronenplatz
DELIBURGERS	Akademiestraße 39, 76133 Karlsruhe	Europaplatz
BRATAR	Erbprinzenstraße 27, 76133 Karlsruhe Am-Ettlinger-Tor-Platz 1, 76133 Karlsruhe	Herrenstraße, Europaplatz Marktplatz
MILLE STELLE	Akademiestr. 38-40, 76133 Karlsruhe	Europaplatz
PURINO	Kaiserallee 3, 76133 Karlsruhe	Mühlburger Tor
MOGOGO	Stephanienstraße 2a, 76133 Karlsruhe	Herrenstraße, Europaplatz
BANGKOK	Douglasstr. 12-14, 76133 Karlsruhe	Europaplatz
FOODLAND	Kaiserstraße 32, 76133 Karlsruhe	Kronenplatz
KRUA THAI	Passagehof 28, 76133 Karlsruhe	Europaplatz
YANGDA	Kaiserstr. 114, 76133 Karlsruhe Passagehof 28, 76133 Karlsruhe	Herrenstraße, Europaplatz Europaplatz
YIN-YANG	Akademiestr. 41, 76133 Karlsruhe	Europaplatz

4. Explore the surrounding Area

If you want to explore cities near Karlsruhe, there are Heidelberg and Freiburg within reasonable reach. Starting at Karlsruhe Central Train Station, Heidelberg (Hbf) is 45 minutes away by regional train S3 which usually leaves every hour. Freiburg (Breisgau Hbf) is farther away and takes an hour to reach per long-distance train (ICE) or a less frequent connection per regional train (every two hours) that takes about double the time and has an interchanging point in Offenburg. For the detailed timetables please consult the website of the Deutsche Bahn:

<https://www.bahn.com/en/view/index.shtml>

Heidelberg is a beautiful city at the river Neckar, mostly known for the Heidelberg Castle, the Old Bridge, Philosophers Walk and its reputable university. Less known are the facts that the former residence of the Electorate of the Palatinate with the romantic landscape and the charming Old Town has once been a center of brewing expertise or that it has become “UNESCO City of Literature” in 2014.

Freiburg im Breisgau is also a famous old German university town. The sunniest and warmest city of Germany is situated in the heart of the major wine-growing region of Baden and on the western edge of the Black Forest. Founded 1120 as a free market town, it became a commercial, intellectual and cultural center. The most known sight is the medieval gothic cathedral Minster.



Heidelberg Castle Illumination with fireworks

View of Freiburg Old Town from the Minster

Tourist information Heidelberg	https://www.heidelberg-marketing.de/en/service/tourist-information.html
Tourist information Freiburg	https://visit.freiburg.de/en
Heidelberg Castle Illumination (July 13 th 2019)	https://www.heidelberg-marketing.de/en/events/highlights/castle-illuminations.html
Heidelberg Flute Concert with Kathrin Christians and the Philharmonic Orchestra of Heidelberg (July 13 th and 16 th 2019)	https://www.theaterheidelberg.de/produktion/floetenzauber-und-schlossmusik/
Freiburg Open-Air concerts (July 14 th and 21 th 2019)	https://www.freiburg.de/pb/,Lde/484873.html

5. Emergency Numbers and Basic German

During your stay, please avoid to wander alone and prefer to stay in groups instead. If you need to go alone, be sure to inform at least one of your fellow students on your whereabouts. If an emergency situation shall arise, contact the following emergency numbers:

Police	110
Fire brigade AND rescue crew	112



Summer time with food and drinks in a Biergarten (beer-garden)

Here are some basic German phrases for daily conversations:

Hello.	Hallo.
Good morning/day/afternoon/evening/night.	Guten Morgen/Tag/Nachmittag/Abend/Nacht.
How are you?	Wie geht's?
Where are you from?	Woher kommen Sie? (polite)
My name is x.	Mein Name is x.
I'm from x.	Ich komme aus x.
Goodbye.	Tschüss.
Excuse me.	Entschuldigung.
Do you speak English?	Sprechen Sie Englisch?
Please write that down for me.	Schreiben Sie das bitte für mich auf.
Thank you (very much).	Danke/Vielen Dank.
I want to go to x.	Ich möchte nach x.
How do I get there?	Wie komme ich dorthin?
Is it this way?	Geht es hier lang?
I'm looking for x.	Ich suche nach x.
I'd like to have x.	Ich hätte gerne x.
What is this?	Was ist das?
How much is this?	Wie viel kostet das?
Yes please.	Ja bitte.
No thanks.	Nein danke.
The bill, please.	Die Rechnung, bitte.