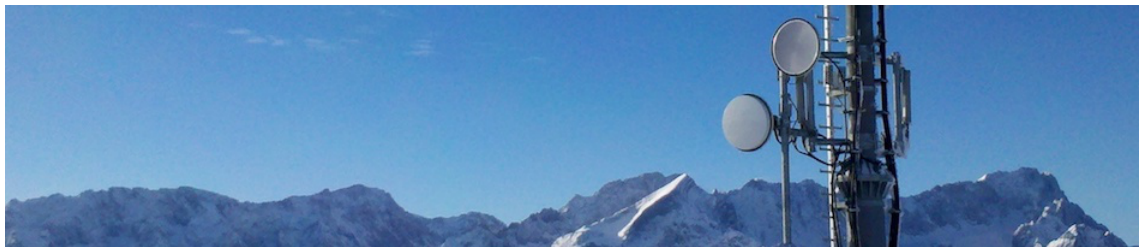


## **Session Program**

**Jun 25 - 28, 2019**



# **Symposium on the hydrometeorological usage of data from commercial microwave link networks**

## **Overview presentations**

KIT Campus Alpin, large seminar room  
Kreuzeckbahnstraße 19 82467 Garmisch-Partenkirchen

## Tue, June 25

10:55 AM

### Overview presentations: HyMet CML research overview of the different countries and institutes 1

**Session** | **Location:** KIT Campus Alpin, large seminar room, Kreuzeckbahnstraße 19 82467 Garmisch-Partenkirchen

10:55 – 11:10

#### Country-wide rainfall estimation with CML data in Germany: The past, the present and the future

##### Speaker

Dr Christian Chwala

11:10 – 11:25

#### Wet Antenna Attenuation Estimation by Monitoring the Reflection Coefficient

##### Speaker

Mr Clemens Moroder

11:25 – 11:40

#### Inherent limitations in 2-D rain retrieval from CMLs

##### Speaker

Prof. Hagit Messer-Yaron

11:40 – 11:55

#### Other-than-rainfall monitoring of moisture, fog and dew

##### Speaker

Prof. Pinhas Alpert

11:55 AM

1:20 PM

### Overview presentations: HyMet CML research overview of the different countries and institutes 2

**Session** | **Location:** KIT Campus Alpin, large seminar room, Kreuzeckbahnstraße 19 82467 Garmisch-Partenkirchen

13:20 – 13:40

#### Commercial microwave link rainfall estimation for the Netherlands and upscaling to developing regions

##### Speaker

Dr Aart Overeem

13:40 – 13:55

#### Rainfall detection by wireless microwave links in Italy: the story so far

##### Speaker

Roberto Nebuloni

13:55 – 14:10

#### Opportunistic Use of Data from Satellite Communication Networks for Rainfall Estimation

##### Speaker

Dr Ahmad Gharanjik

14:10 – 14:25

#### 3-D Rain Rate Estimation from Integrated Measurements of Commercial Wireless and Satellite Links: an overview

2:25 PM

**Speaker**  
Fabio Saggese