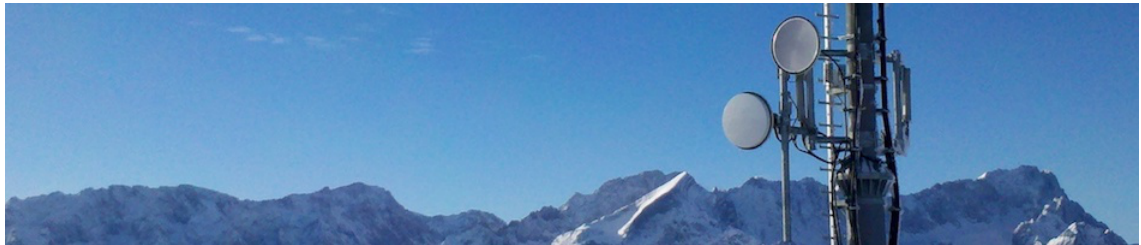


Session Program

Jun 25 - 28, 2019



Symposium on the hydrometeorological usage of data from commercial microwave link networks

Posters with coffee and cake

KIT Campus Alpin, large seminar room
Kreuzeckbahnstraße 19 82467 Garmisch-Partenkirchen

Tue, June 25

2:50 PM

Posters with coffee and cake: HyMet CML research overview of the different countries and institutes

Poster Session |

Location: KIT Campus Alpin, large seminar room, Kreuzeckbahnstraße 19 82467 Garmisch-Partenkirchen

Rainfall retrieval using commercial microwave links in Melbourne, Australia

Speaker

Jayaram Pudashine

Rain Rate Retrieval Test from Millimeter-wave Measurement in Beijing

Speaker

Dr Congzheng Han

Opportunistic use of commercial microwave links and meteosat second generation data for rainfall studies in Kenya

Speaker

Kumah Kwabena Kingsley

The challenges along the CML data processing chain and how we tackle them

Speaker

Christian Chwala

Applying CML rainfall estimation at regional and urban scale in Nigeria, Sri Lanka and Bangladesh

Speaker

Thomas van Leth

3:50 PM

2:50 PM

Posters with coffee and cake: Specific HyMet CML research topics

Poster Session |

Location: KIT Campus Alpin, large seminar room, Kreuzeckbahnstraße 19 82467 Garmisch-Partenkirchen

Performance evaluation of rain level estimation from CMLs

Speaker

Taeer Weiss

Estimating raindrop size distributions using microwave link measurements

Speaker

Thomas van Leth

Urban Humidity Field from Commercial Microwave Links

Speaker

Mr Yoav Rubin

Path Averaged Rainfall as a Single Point: Unfulfilled Potential or a Good Enough Convention?

Speaker

Adam Eshel

Classifying fog depth using data from commercial microwave links

Speaker

Mr David Tsidkiah

Analysis of RSSI of signals sampled from an operational E-Band wireless communication network

Speaker

Ms Mor Hadar

3:50 PM