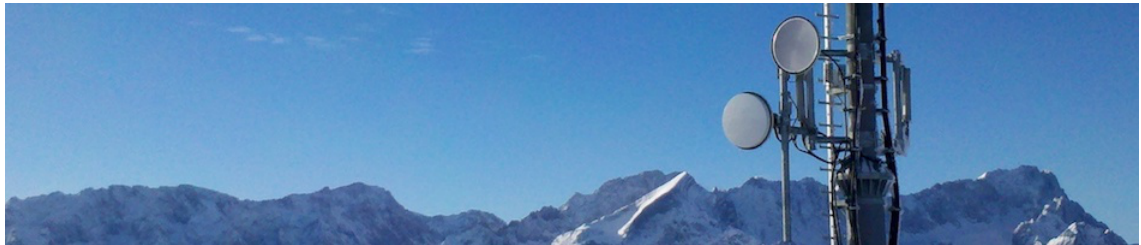


## **Session Program**

**Jun 25 - 28, 2019**



# **Symposium on the hydrometeorological usage of data from commercial microwave link networks**

## **Stakeholder presentations**

KIT Campus Alpin, large seminar room  
Kreuzeckbahnstraße 19 82467 Garmisch-Partenkirchen

## Tue, June 25

3:50 PM

### Stakeholder presentations: Stakeholder views on HyMet challenges and CML networks

**Session** | **Location:** KIT Campus Alpin, large seminar room, Kreuzeckbahnstraße 19 82467 Garmisch-Partenkirchen

15:50 - 16:05

#### The mobile industry view on CML for rainfall observation: A GSMA perspective

**Speaker**

Mr Daniele Tricarico

16:05 - 16:20

#### An overview of the real-time radar-based precipitation analysis of Deutscher Wetterdienst and plans for including CML data

**Speaker**

Dr Tanja Winterrath

16:20 - 16:35

#### Rain monitoring with commercial microwave link networks in Sweden

**Speaker**

Remco van de Beek

16:35 - 16:50

#### Automatic classification of fading events in large microwave networks

**Speaker**

Dr Jonas Hansryd

4:50 PM