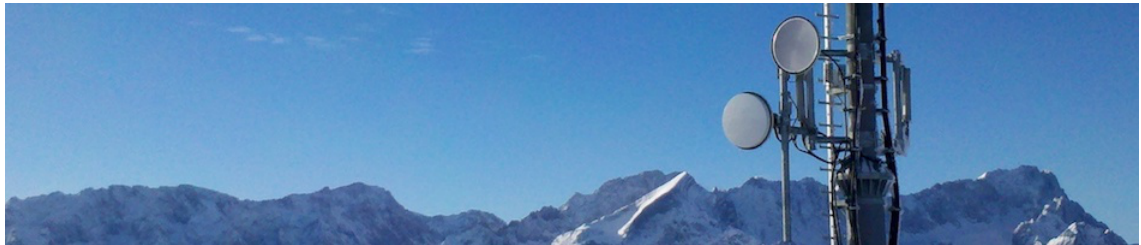


Session Program

Jun 25 - 28, 2019



Symposium on the hydrometeorological usage of data from commercial microwave link networks

Specific research topics

KIT Campus Alpin, large seminar room
Kreuzeckbahnstraße 19 82467 Garmisch-Partenkirchen

Wed, June 26

9:15 AM

Specific research topics: Long-term and/or large-scale analysis

Session | **Location:** KIT Campus Alpin, large seminar room, Kreuzeckbahnstraße 19 82467 Garmisch-Partenkirchen

09:15 – 09:35

Methodology improvement of microwave link derived rain rate in Sweden

Speaker

Remco van de Beek

09:35 – 09:55

The challenge of processing one year of German-wide CML data

Speaker

Maximilian Graf

09:55 – 10:10

Rainfall estimation accuracy of a nation-wide instantaneously sampling commercial microwave link network: error-dependency on known characteristics

Speaker

Dr Aart Overeem

10:10 AM

10:30 AM

Specific research topics: CML time series processing

Session | **Location:** KIT Campus Alpin, large seminar room, Kreuzeckbahnstraße 19 82467 Garmisch-Partenkirchen

10:30 – 10:50

Comparison of the achievable accuracy of CML based rain-retrieval algorithms based on min/max measurements vs. instantaneous measurements

Speaker

Dr Jonatan OSTROMETZKY

10:50 – 11:10

Detecting rainfall events in CML attenuation time series using convolutional neural networks

Speaker

julius polz

11:10 AM

11:30 AM

Specific research topics: Error sources and corrections

Session | **Location:** KIT Campus Alpin, large seminar room, Kreuzeckbahnstraße 19 82467 Garmisch-Partenkirchen

11:30 – 11:50

Electromagnetic Phenomena behind the Wet Antenna Effect

Speakers

Clemens Moroder, Dr Uwe Siart

11:50 – 12:10

Long-term rainfall-runoff experiment at a small urban catchment using dense CML network

Speaker

Dr Vojtěch Bareš

12:30 PM

12:10 - 12:30

Rainfall estimation from Cellular Networks data based on local climatology.**Speaker**

Yury Lechinsky

1:50 PM

Specific research topics: Spatial reconstruction and data fusion**Session** | **Location:** KIT Campus Alpin, large seminar room, Kreuzeckbahnstraße 19 82467 Garmisch-Partenkirchen

13:50 - 14:10

Stochastic reconstruction of precipitation fields using commercial microwave link information**Speaker**

Dr Barbara Haese

14:10 - 14:30

Key parameters for the tomographic reconstruction of rainfall fields**Speaker**

Mr Angelo Sileo

14:30 - 14:50

Finding an optimal grid resolution**Speaker**

Remco van de Beek

14:50 - 15:10

Coffee

15:10 - 15:30

3-D Rain Rate Estimation from Integrated Measurements of Commercial Wireless and Satellite Links**Speaker**

Fabio Saggese

15:30 - 15:50

Signal Processing Approach to Spatial Reconstruction and Data Fusion**Speaker**

Prof. Hagit Messer-Yaron

3:50 PM

4:10 PM

Specific research topics: Diversity**Session** | **Location:** KIT Campus Alpin, large seminar room, Kreuzeckbahnstraße 19 82467 Garmisch-Partenkirchen

16:10 - 16:30

Rainfall retrieval with new generation of cellular backhaul network operating at E-band**Speaker**

Martin Fencel

16:30 - 16:50

TBA**Speaker**

Yoav Rubin

4:50 PM