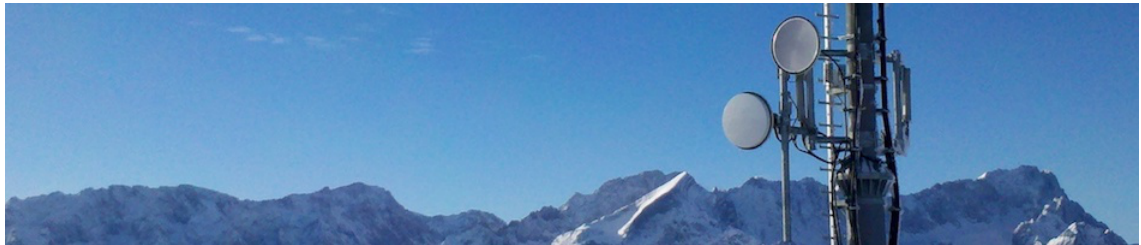


Session Program

Jun 25 - 28, 2019



Symposium on the hydrometeorological usage of data from commercial microwave link networks

Community topics

KIT Campus Alpin, large seminar room
Kreuzeckbahnstraße 19 82467 Garmisch-Partenkirchen

Thu, June 27

9:15 AM	Community topics: Standards Session Location: KIT Campus Alpin, large seminar room, Kreuzeckbahnstraße 19 82467 Garmisch-Partenkirchen
	09:15 – 09:35 Naming conventions
	09:35 – 09:55 Performance metrics
10:15 AM	
10:35 AM	Community topics: Data sets and tools Session Location: KIT Campus Alpin, large seminar room, Kreuzeckbahnstraße 19 82467 Garmisch-Partenkirchen
	10:35 – 10:50 Open high-resolution signal strength data from a commercial microwave link network in Gothenburg, Sweden Speaker Dr Remco van de Beek
	10:50 – 11:05 pycomlink - a Python toolbox for CML data processing
	11:05 – 11:20 R packages
11:35 AM	
3:20 PM	Community topics: Future collaboration and joint proposals Session Location: KIT Campus Alpin, large seminar room, Kreuzeckbahnstraße 19 82467 Garmisch-Partenkirchen
	15:20 – 16:05 Cost Action OPENSENSE: Opportunistic precipitation sensing network
4:20 PM	
4:40 PM	Community topics: Conclusions Session Location: KIT Campus Alpin, large seminar room, Kreuzeckbahnstraße 19 82467 Garmisch-Partenkirchen
5:40 PM	