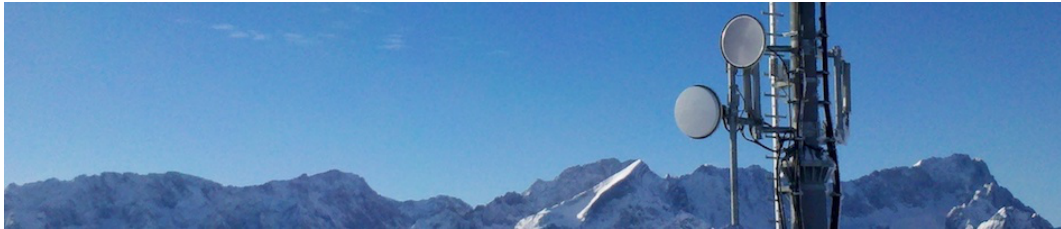


Session Program

Jun 25 - 28, 2019



Symposium on the hydrometeorological usage of data from commercial microwave link networks

Short presentations

KIT Campus Alpin, large seminar room
Kreuzeckbahnstraße 19 82467 Garmisch-Partenkirchen

Tue, June 25

2:25 PM

Short presentations: HyMet CML research overview of the different countries and institutes

Session | **Location:** KIT Campus Alpin, large seminar room, Kreuzeckbahnstraße 19 82467 Garmisch-Partenkirchen

2:25 – 2:30 PM

Combining microwave links and meteosat second generation data for rainfall studies in Kenya

Speaker

Kumah Kwabena Kingsley

2:30 – 2:35 PM

Rain rate retrieval test from millimeter wave link measurement in Beijing

Speaker

Congzheng Han

2:35 – 2:40 PM

Improve rainfall measurement using CML in Melbourne

Speaker

Jayaram Pudashine

2:40 – 2:45 PM

First results of CML rainfall estimation in Palestine (presented by C. Chwala)

Speakers

Christian Chwala, Dr Sameer Shadeed

2:45 – 2:50 PM

CML rainfall estimation in Burkina Faso (presented by C. Chwala)

Speakers

Christian Chwala, Prof. François Zougmore

2:50 PM